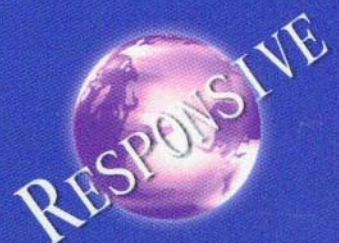
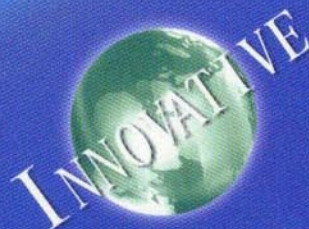
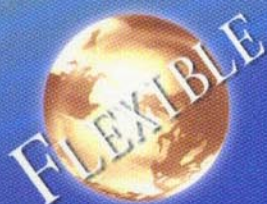




ADDISON

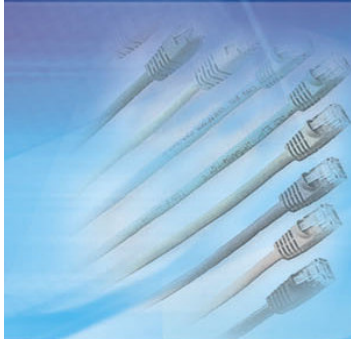
Vision Vision Vision Vision Vision





ADDISON

CABLING SYSTEM



2002

TABLE OF CONTENTS

Open Matrix System

Page

1 - 2

Jack Solution

3 - 4

Panel Solution

5 - 9

Faceplate Solution

10-12

**Surface Mount Box & Cable
Management Solution**

13

110 Solution

14

Telco Solution

15

Patch Cord Solution

16-18

Fiber Solution

19-25

Tool & Tester Solution

26-27

Rack & Cabinet Solution

28-32

■ Company Profile

At Addison Technology, our most important values are excellence, quality and performance. Be it state of the art system development, quality distribution services, global technical training and support services or our acclaimed 30-year warranty programs, Addison is committed to providing the best values to our customers.

Addison cabling system originated as a cabling solution produced and marketed by Caledonian Cables International Ltd located at Sussex, England. Founded in 1978, Caledonian Cables originally entered the market as an OEM manufacturer of cables. Our major customers include Reuters, British Petroleum, British Railway, British Telecom, Thorn, ABB etc.

Through the 1990s, Caledonian was strictly a cable OEM manufacturer and patch cord pre-assembler for the bigger cable companies in Europe. Shortly after, we developed other modular apparatus and connectors to support the cabling industries, but it was not until 1997 that Caledonian entered the data cabling market with complete solutions branded under Addison for the twisted pair network environment. In 1998, Caledonian emerged as one of the promising OEM cabling solution manufacturers in Europe.

Several years later after following Caledonian in the spirit of entrepreneurship and innovation, Addison Technology became an independent entity. Today Addison Technology has representative offices around major cities in Shenzhen, Beijing, Singapore, Hong Kong, California, Las Vegas to support its worldwide customers.

With the establishment of Addison Laboratory for testing, research and development, Addison now offers the OMS Link & Channel solution to provide an open system for Category 5e & 6 cabling applications conforming to latest draft of the TIA/EIA 568B and ISO 11801 standards. The OMS provides the following complete networking solution for your needs.



■ Open Matrix System

■ Open System Concept

Structured cabling systems today are designed based on a populated matrix concept over a specified work area. Many network connectivity solutions provider developed proprietary connectivity solutions that are optimized for limited applications encompassing only a few major hardware manufacturers with the intention of locking in the customers. Such systems, as typified by some new fiber optic connectivity today, are known as "Close Matrix".

A true OPEN MATRIX SYSTEM allows different brands of standard-compliant connectivity products to work together. The OPEN MATRIX SYSTEM (OMS) is designed by Addison Laboratory based on the open matrix concept. It is designed to be equipped with superior connectivity components and cables for delivering a system that meets or outperforms any of the top cabling connectivity solutions available today.

OPEN MATRIX SYSTEM offer customers selection in connectivity without compromising on performance. A list of top quality manufacturers have been selected to create the suite of OMS cabling systems.

TO qualify for system warranty, each OMS component is required to demonstrate electrical performance which greatly exceeds Channel or Link specifications conforming to the TIA/EIA 568B or ISO 11801 standard.

● Performance Specifications

To assure customers of significant channel headroom, OMS components are required to meet following performance specifications:

1. In the Bit Error Rate tests, the OMS components must pass specifications of IEE 802.3ab with zero bit errors.
2. In the Permanent Link or Channel Link tests, the OMS components must exceed industry specifications for PS NEXT, PS ELFEXT, and Return Loss with minimum margin across the entire frequency range as follows:

Link/Channel Testing	CAT 5e	CAT 6
PSNEXT	4db	3db
PSELFEXT	4db	3db
Return loss	4db	3db

OMS assures a minimum 3 dB margin for Category 6 and 4 dB margin for category 5e. OMS program is more than just a warranty program. This is a unique combination of performance assurance, open-architecture, and manufacturer warranty. With combination of all these benefits, OMS are unequaled in the marketplace.



• Open Matrix System (OMS)

Addison extends Link or channel warranty for system installations made by a certified installer in accordance with TIA/EIA 568B and ISO/IEC 11801 standard.

This 30-Year warranty assures that products comprising the system will be free from defects in material or workmanship. The product should include Addison cables together with connectivity hardware from recognized suppliers.

The system will support any current or future application that supports transmission over the system in accordance with industry standards in force at the time of manufacture.

In the case of a valid claim, this warranty covers replacement of any faulty product, and reasonable cost of labor to remedy the warranty claim.

This warranty only applies to projects which have utilized 100% Addison cabling product in the network and after proper certification has been obtained. Other than cables, installers are free to choose from any of the recognized connectivity suppliers or purchase Addison OEM products (as listed in this catalogue) to make up the whole system.

• OMS Link Warranty

This warranty covers the Permanent Link of the network: which includes the cable and connecting hardware. This warranty does not cover other elements of the channel, such as patch cords, equipment cords and faceplates etc. Addison will honor claims on this warranty for 30 years, on condition that the electrical performance provided by the combination of the different components of the permanent link have been certified by Addison to meet the industry standard, as defined by the TIA 568 latest standard for the " Permanent Link " in force at time of purchase with the following conditions:

1. All the connectivity equipment used in the network must be supplied by one or more of the approved suppliers AND each component must be UL or ITS/ETL listed, or verified by an independent testing agency to meet the TIA568 standard in force at the time of purchase. Please contact Addison sales for the approved connectivity manufacturers.
2. Each link or Channel in the network must be field tested and have passed all TIA 568 requirements. The whole system must be designed and installed by "BICSI Certified" or Addison approved installers.

• OMS Channel Warranty

This warranty covers the channel link of the network. The OMS Channel Warranty will cover all components of the channel, which include telecommunications outlet, horizontal cabling, patch panels, patch cords and the equipment cords. Addison will honor claims on this warranty for 30 years under the same condition of OMS Link Warranty.

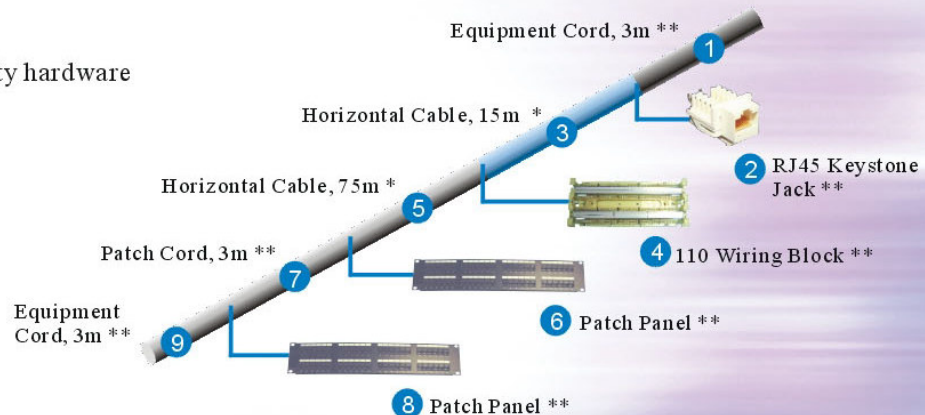
Addison offers OMS program as an Application Assurance and Extended product warranty that ensures all the system components will exceed the applicable standard together with supporting any current and future application. Addison makes this extended product warranty available to BICSI or Addison certified installers to offer identical assurances and warranty to their customers for certified OMS system installations.

• Exclusion

These warranties cover the reasonable cost of labor to remedy a warranty claim, but do not cover the cost of any products or associated labor not sold or provided by Addison, and are not transferable from original installation.

* Addison cable

** Any recognized connectivity hardware or Addison OEM product



Category 5e, Keystone Jack Unshielded, Half, Fully Shielded Versions Category 6, Keystone Jack Unshielded, Half, Fully Shielded Versions

Features

- Easy to terminate, compact jack design.
- Significant margin over TIA/EIA 568-B & ISO/IEC 11801.
- Twists are maintained to within 1/2" (12.7mm).
- Available in 7 standard colors for easy color coding for any decoration purpose.
- Work in standard Keystone opening (0.58" X 0.78" or 14.732mm x 20.066mm).
- High-density configuration, for mounting more jacks in plates.
- Beryllium copper contacts for superior connectivity.
- IDC contact design eliminates need to strip individual conductors and ensures reliable termination.
- Can be re-terminated a minimum number of 250 times.
- Fit in panel, surface boxes and faceplates for different applications.
- Dust Cap/Retention Caps over termination provides strain relief.
- Supplied with color coded dust cover for dust and dampness protection.
- Tested with swept frequency 1-155 MHz for Category 5e and 1-250 MHz for Category 6.
- Accepts 110 punch down tool or Krone punch down tools.
- Color coded for 568A and 568B wiring scheme.

Physical Specifications:

- UL 94V-0 high-impact, fire-retardant ABS material.
- Beryllium Copper Contact: 50 micro inch (μ ") gold-plated pins over 100 micro inch (μ ") nickel layer.
- Feature staggered plug contacts.
- Take IDC 22-26 AWG wires.

Mechanical Specifications

- Insertion Life Cycle: 1,000 cycles (minimum)/I.D.C 250 cycles (minimum)
- Plug Retention Force: 30 lb. (minimum).
- Plug & Jack Contact Force: 100 g.

Electrical Specifications

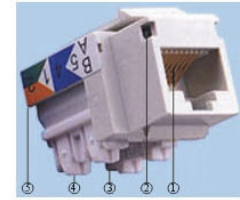
- Insulation Resistance: 500M Ω .
- Contact Resistance: 20M Ω .
- Current Rating: 1.5 Amps.
- DC Resistance: Max.0.1 Ω .
- Dielectric Withstand Voltage: 1,000VAC RMS @ 60Hz/1 min

Color Options: White, Black, Red, Yellow, Green, Blue, Orange.

Standards: ANSI/EIA/TIA 568B, ISO/IEC 11801.

Applications

- 1,000 Mbps Gigabit Ethernet (IEEE 802.3Z).
- 622 Mbps ATM.
- 155 Mbps ATM.
- 100 Mbps TP-PMD.
- 100 Mbps Fast Ethernet (IEEE 802.3U).
- 100 Mbps FDDI.
- 10 Mbps Ethernet (IEEE 802.3).
- 4 Mbps & 16Mbps Token-Ring (IEEE 802.5).
- ISDN.
- Analog voice.



UTP CAT5E Jack Unshielded

1. 50 micro inch (μ ") gold-plated pins over 100 micro inch (μ ") nickel layer
2. Dust Cover
3. IDC Termination (110 or Krone Type)
4. Dust Cap
5. 568A/B Identification



UTP CAT5E Keystone Fully Shielded, Half & Unshielded Jacks



UTP CAT5E Unshielded Keystone Jacks



UTP CAT6 Unshielded Keystone Jacks

• Pin Assignment

EIA/TIA T568A Pairs	Jack RJ45	110 Clip Color Code	EIA/TIA T568B Pairs	Jack RJ45	110 Clip Color Code
#1	5	White/Blue	#1	5	White/Blue
	4	Blue/White		4	Blue/White
#2	3	White/Orange	#2	1	White/Orange
	6	Orange/White		2	Orange/White
#3	1	White/Green	#3	3	White/Green
	2	Green/White		6	Green/White
#4	7	White/Brown	#4	7	White/Brown
	8	Brown/White		8	Brown/White

• Ordering Information

Part No.	Description
AD-KM-5e-A/B-180-XX	CAT 5e, 8P8C, 180°C, Unshielded T568A/B Wiring
AD-KM-C6-A/B-180-XX	CAT 6, 8P8C, 180°C, Unshielded T568A/B Wiring
AD-KM-C5e-A/B-45-XX	CAT 5e, 8P8C, 45°C, Unshielded T568A/B Wiring
AD-KM-C6-A/B-45-XX	CAT 6, 8P8C, 45°C, Unshielded T568A/B Wiring
AD-KM-C5eS-A/B-180-XX	CAT 5e, 8P8C, 180°C, Shielded, T568A/B Wiring
AD-KM-C6S-A/B-180-XX	CAT 6, 8P8C, 180°C, Shielded, T568A/B Wiring
AD-KM-C5eS-A/B-45-XX	CAT 5e, 8P8C, 45°C, Shielded, T568A/B Wiring
AD-KM-C6S-A/B-45-XX	CAT 6, 8P8C, 45°C, Shielded, T568A/B Wiring
AD-KM-C5eFS-A/B-180-XX	CAT 5e, 8P8C, 180°C, Full Shielded, T568A/B Wiring
AD-KM-C6FS-A/B-180-XX	CAT 6, 8P8C, 180°C, Full Shielded, T568A/B Wiring
AD-KM-C5eFS-A/B-45-XX	CAT 5e, 8P8C, 45°C, Full Shielded, T568A/B Wiring
AD-KM-C6FS-A/B-45-XX	CAT 6, 8P8C, 45°C, Full Shielded, T568A/B Wiring
AD-KM-FSC	Full Shielded shell cover

■ Dust Cover

Each Keystone Jack is supplied with color coded dust cover to match with jack color.
Each dust cover is marked with icon of monitor (for data), telephone (for voice) or left blank.

• Ordering information

Part No.	Description
AD-KM-DI-XX	Monitor icon for data
AD-KM-VI-XX	Telephone icon for voice
AD-KM-BI-XX	Blank icon

XX=Color Code: BK-Black RD-Red GN-Green
YL-Yellow BL-Blue WH-White
OR-Orange GY-Grey IV-Ivory



Dust Cover

■ Panel Solution

■ Category 5e Patch Panel, unshielded & shielded version Category 6 Patch Panel, unshielded & shielded version

● Features:

- 110 & Krone Dual Block.
- Color-coded for T568A and T568B wiring schemes.
- Significant margin over TIA/EIA-568B & ISO/IEC 11801 standard.
- Color coded icon identification sticker for installation.
- They allow flexible grounding for shielded cable for each IDC pin.
- Writable & erasable marking surface for each port on the front panel.
- All panels are powersum swept frequency tested.
- Shielded panels incorporate 360° stainless steel for full EMI. (Electro-magnetic Immunity) shielding required by EN 50173.

● Physical Specifications

- High-density 1U, 19" RMS (rack mount standard) for 24 ports panel.
- Meet EIA-310-D specifications.
- Apply UL 94V-0 high-impact, fire-retardant ABS material.
- A pair punch sequence enables a pair twist within 1/2" of termination.
- Beryllium Copper Contact: 50 micro inch (μ ") gold-plated pins over 100 micro inch (μ ") nickel layer.
- Accepts 22-26 AWG wires.

● Mechanical Specification

- Insertion Life Cycle: 1,000 cycles (minimum) / I.D.C 250 cycles (minimum).

● Electrical Specifications

- Insulation Resistance: 500M Ω .
- Contact Resistance: 20M Ω .
- Current Rating: 1.5 Amps.
- DC Resistance: Max.0.1 Ω .
- Dielectric Withstand Voltage: 1,000VAC RMS @ 60Hz/1 min.

● Standards

Meets TIA/EIA 568B & ISO 11801.



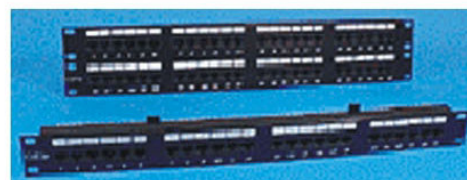
24 Port Unshielded Panel



48 Port Unshielded Panel



24 Port Cat5e Shielded Patch Panel

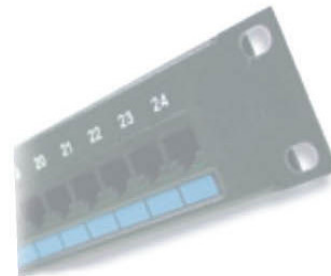


24 & 48 Port Cat5e Unshielded Patch Panel



• Applications

- 1,000 Mbps Gigabit Ethernet (IEEE 802.3Z).
- 622 Mbps ATM.
- 155 Mbps ATM.
- 100 VG-Any LAN (IEEE 802.12).
- 100 Mbps TP-PMD.
- 100 Mbps Fast Ethernet (IEEE 802.3u).
- 100 Mbps CDDI.
- 10 Mbps Ethernet (IEEE 802.3).
- 4 Mbps & 16 Mbps Token-Ring (IEEE 802.5).
- ISDN.
- Analog voice.



• Ordering information

• Unshielded Category 5e Patch Panel:

Part No.	Description	Dimension	Wiring
AD-PP-16-C5e-A/B	UTP Category 5e 16 Ports Patch Panel	1.8"x19" 1U	T568A/B
AD-PP-24-C5e-A/B	UTP Category 5e 24 Ports Patch Panel	1.8"x19" 1U	T568A/B
AD-PP-32-C5e-A/B	UTP Category 5e 32 Ports Patch Panel	3.6"x19" 2U	T568A/B
AD-PP-48-C5e-A/B	UTP Category 5e 48 Ports Patch Panel	3.6"x19" 2U	T568A/B
AD-PP-72-C5e-A/B	UTP Category 5e 72 Ports Patch Panel	5.4"x19" 3U	T568A/B
AD-PP-96-C5e-A/B	UTP Category 5e 96 Ports Patch Panel	7.2"x19" 4U	T568A/B

• Unshielded Category 6 Patch Panel:

Part No.	Description	Dimension	Wiring
AD-PP-16-C6-A/B	UTP Category 6 16 Ports Patch Panel	1.8"x19" 1U	T568A/B
AD-PP-24-C6-A/B	UTP Category 6 24 Ports Patch Panel	1.8"x19" 1U	T568A/B
AD-PP-32-C6-A/B	UTP Category 6 32 Ports Patch Panel	3.6"x19" 2U	T568A/B
AD-PP-48-C6-A/B	UTP Category 6 48 Ports Patch Panel	3.6"x19" 2U	T568A/B
AD-PP-72-C6-A/B	UTP Category 6 72 Ports Patch Panel	5.4"x19" 3U	T568A/B
AD-PP-96-C6-A/B	UTP Category 6 96 Ports Patch Panel	7.2"x19" 4U	T568A/B

• Shielded Category 5e Patch Panel:

Part No.	Description	Dimension	Wiring
AD-PP-16-C5eS-A/B	FTP Category 5e 16 Ports Patch Panel	1.8"x19" 1U	T568A/B
AD-PP-24-C5eS-A/B	FTP Category 5e 24 Ports Patch Panel	1.8"x19" 1U	T568A/B
AD-PP-48-C5eS-A/B	FTP Category 5e 48 Ports Patch Panel	3.6"x19" 2U	T568A/B

• Shielded Category 6 Patch Panel:

Part No.	Description	Dimension	Wiring
AD-PP-16-C6S-A/B	FTP Category 6 16 Ports Patch Panel	1.8"x19" 1U	T568A/B
AD-PP-24-C6S-A/B	FTP Category 6 24 Ports Patch Panel	1.8"x19" 1U	T568A/B
AD-PP-48-C6S-A/B	FTP Category 6 48 Ports Patch Panel	3.6"x19" 2U	T568A/B

• UnShielded Category 5e Mini Panel:

Part No.	Description	Dimension	Wiring
AD-MP-12-C5e-A/B	UTP Category 5e 12 Ports Patch Panel	1.8"x10" 1U	T568A/B
AD-MP-12-C6-A/B	UTP Category 6 12 Ports Patch Panel	1.8"x10" 1U	T568A/B
AD-MP-12R	Rack for Mini Panel		



12 Port Cat5e
Unshielded Vertical Patch Panel

■ Panel Solution

■ Telco Patch Panel

● Features:

- Significant margin over ANSI/TIA-568-B & ISO/IEC 11801.
- Converts 50 pins TELCO cable to modular jack.
- Provide reliable performance up to Cat 5.
- Exceeds 10 Base-T (10 M Ethernet) & 100 Base-TX (100M Ethernet) performance.
- Support USOC, 10 Base T , WECO wiring.
- Standard size in EIA 19".

● Physical Specifications

- Beryllium Copper Contact: 50 micro inch (μ ") gold-plated pins over 100 micro inch (μ ") nickel layer.
- Insertion Life Cycle: 750 cycles (minimum).

● Electrical Specifications

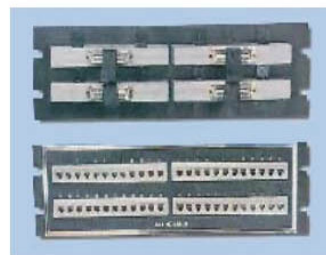
- Insulation Resistance: 500M. Ω .
- Contact Resistance: 20M. Ω .
- Current Rating: 1.5 Amps.
- DC Resistance: Max. 0.1 Ω .
- Dielectric Withstand Voltage: 1,000VAC RMS @60Hz/1 min.

● Applications

- 100 Mbps Ethernet(IEEE 802.3u).
- 10 Mbps Ethernet (IEEE 802.3).
- 4 Mbps & 16 Mbps Token-Ring (IEEE 802.5).
- ISDN.
- Analog voice.

● Ordering Information.

Part No.	Description
AD-TP-24-6P4C-M-X	24 ports 6P4C to Telco Male patch panel
AD-TP-24-6P4C-F-X	24 ports 6P4C to Telco Female patch panel
AD-TP-24-8P4C-M-X	24 ports 8P4C to Telco Male patch panel
AD-TP-24-8P4C-F-X	24 ports 8P4C to Telco Female patch panel
AD-TP-24-6P6C-M-X	24 ports 6P6C to Telco Male patch panel
AD-TP-24-6P6C-F-X	24 ports 6P6C to Telco Female patch panel
AD-TP-24-8P8C-M-X	24 ports 8P8C to Telco Male patch panel
AD-TP-24-8P8C-F-X	24 ports 8P8C to Telco Female patch panel
AD-TP-48-6P4C-M-X	48 ports 6P4C to Telco Male patch panel
AD-TP-48-6P4C-F-X	48 ports 6P4C to Telco Female patch panel
AD-TP-48-8P4C-M-X	48 ports 8P4C to Telco Male patch panel
AD-TP-48-8P4C-F-X	48 ports 8P4C to Telco Female patch panel
AD-TP-48-6P6C-M-X	48 ports 6P6C to Telco Male patch panel
AD-TP-48-6P6C-F-X	48 ports 6P6C to Telco Female patch panel
AD-TP-48-8P8C-M-X	48 ports 8P8C to Telco Male patch panel
AD-TP-48-8P8C-F-X	48 ports 8P8C to Telco Female patch panel

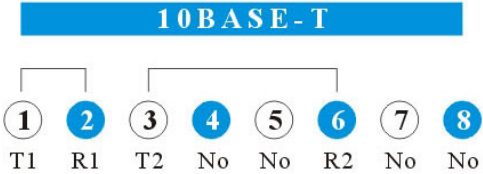
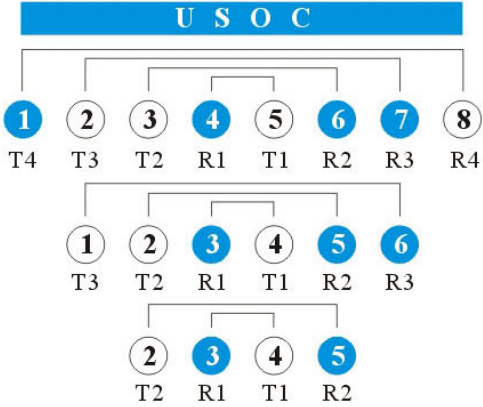


Telco Patch Panel



X:
A- USOC Wiring
B- 10 Base-T Wiring
C- T 568B /258A Wiring

SCHEDULE1 (USOC)4 WIRE	SCHEDULE2 (USOC)6 WIRE	SCHEDULE3 (USOC)8 WIRE	SCHEDULE4 TIA 568B/258A	SCHEDULE5 (10BASE-T)
50POSN 4W USOC TELCO CHNI# PIN#	50POSN 4W USOC TELCO CHNI# PIN#	50POSN 4W USOC TELCO CHNI# PIN#	50POSN 4W USOC TELCO CHNI# PIN#	50POSN 4W USOC TELCO CHNI# PIN#
26 4 1 3	26 4 1 3	26 5 1 4	26 5 1 4	26 1 1 2
27 1 2 2 5	27 1 2 2 5	27 3 2 6	27 1 2 2	27 1 3 2 6
28 4 3 3	28 1 3 6	28 2 3 7	28 3 3 6	28 1 3 2
29 2 4 5	29 4 4 3	29 1 4 8	29 7 4 8	29 2 3 4 6
30 4 5 3	30 2 2 5 5	30 5 5 4	30 5 5 4	30 1 5 2
31 3 6 5	31 1 6 6	31 3 6 6	31 1 6 2	31 3 3 6 6
32 4 7 3	32 4 7 3	32 2 7 7	32 3 7 6	32 1 7 2
33 4 8 5	33 3 8 5	33 1 8 8	33 7 8 8	33 4 3 8 6
34 4 9 3	34 1 9 6	34 5 9 4	34 5 9 4	34 1 9 2
35 5 10 5	35 4 10 3	35 3 10 6	35 1 10 2	35 5 3 10 6
36 4 11 3	36 4 2 11 5	36 2 11 7	36 3 11 6	36 1 11 2
37 6 12 5	37 1 12 6	37 1 12 8	37 7 12 8	37 6 3 12 6
38 4 13 3	38 4 13 3	38 5 13 4	38 5 13 4	38 1 13 2
39 7 14 5	39 5 2 14 5	39 3 14 6	39 1 14 2	39 7 3 14 6
40 4 15 3	40 1 15 6	40 2 15 7	40 3 15 6	40 1 15 2
41 8 16 5	41 4 16 3	41 1 16 8	41 7 16 8	41 8 3 16 6
42 4 17 3	42 6 2 17 5	42 5 17 4	42 5 17 4	42 1 17 2
43 9 18 5	43 1 18 6	43 3 18 6	43 1 18 2	43 9 3 18 6
44 4 19 3	44 4 19 3	44 2 19 7	44 3 19 6	44 1 19 2
45 10 20 5	45 7 2 20 5	45 1 20 8	45 7 20 8	45 10 3 20 6
46 4 21 3	46 1 21 6	46 5 21 4	46 5 21 4	46 1 21 2
47 11 22 5	47 4 22 3	47 3 22 6	47 1 22 2	47 11 3 22 6
48 4 23 3	48 8 2 23 5	48 6 2 23 7	48 6 3 23 6	48 1 23 2
49 12 24 5	49 1 24 6	49 1 24 8	49 7 24 8	49 12 3 24 6
50 - 25 -	50 - 25 -	50 - 25 -	50 - 25 -	50 - 25 -



■ Panel Solution

■ Blank Patch Panel

● Features:

- Available in 16, 24, 32, and 48 ports.
- Standard size in EIA 19".
- Exchangeable multimedia inserts for different connectors.
- Writable & erasable marking surface for each port on the front panel.

● Ordering Information

Part No.	Description	Dimension
AD-BP-16	16 ports Blank Patch Panel	1.8"x19" 1U
AD-BP-24	24 ports Blank Patch Panel	1.8"x19" 2U
AD-BP-32	32 ports Blank Patch Panel	3.6"x19" 2U
AD-BP-48	48 ports Blank Patch Panel	5.4"x19" 3U



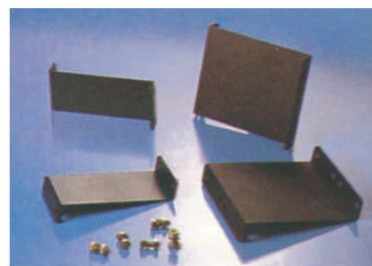
■ Mounting Bracket

● Ordering information

Part No.	Description
AD-MB-1U	Mounting Bracket set in 1U
AD-MB-2U	Mounting Bracket set in 2U
AD-MB 100-2U	Mounting Bracket set in 2U Depth 100mm
AD-MB 100-3U	Mounting Bracket set in 3U Depth 100mm
AD-MB 100-4U	Mounting Bracket set in 4U Depth 100mm
AD-MB 100-6U	Mounting Bracket set in 6U Depth 100mm
AD-MB 250-2U	Mounting Bracket set in 2U Depth 250mm
AD-MB 250-3U	Mounting Bracket set in 3U Depth 250mm
AD-MB 250-4U	Mounting Bracket set in 4U Depth 250mm
AD-MB 250-6U	Mounting Bracket set in 6U Depth 250mm



16 Port Blank
Patch Panel



2U & 4U Mounting Bracket



16/32/48Port Blank
Patch Panel

Keystone Faceplates

Features:

- Work with RJ45, BNC, ST, F connectors or others.
- Available in 1,2,4,6 ports for USA style; 1,2,4 ports for UK & European style; 1,2 & 3 ports for Horizontal style.
- Comes with mounting screws and outlet ID labels.
- Keystone jacks can be snapped in and out individually.
- Modular design for future expansion.
- Apply UL 94V-0 high-impact, fire-retardant ABS material.
- Mainly white color but different color available upon request.
- Complete system for flush (in-wall), modular furniture.



1/2/3/4/6Port USA Faceplates



1/2/4Port USA Faceplates With shutters



1/2/4/6 Port USA Faceplates

Ordering information

USA style Keystone Faceplate

Part No.	Description	Dimension	Type
AD-KF-US-01-180	1 Port USA Faceplate	114mmx70mm	180℃
AD-KF-US-02-180	2 Port USA Faceplate	114mmx70mm	180℃
AD-KF-US-04-180	4 Port USA Faceplate	114mmx70mm	180℃
AD-KF-US-06-180	6 Port USA Faceplate	114mmx70mm	180℃
AD-KF-US-01-45	1 Port USA Faceplate	114mmx70mm	45℃
AD-KF-US-02-45	2 Port USA Faceplate	114mmx70mm	45℃
AD-KF-US-04-45	4 Port USA Faceplate	114mmx70mm	45℃
AD-KF-US-06-45	6 Port USA Faceplate	114mmx70mm	45℃
AD-KF-US-BB-01	Single Gang USA Backbox	115mmx72mm	



Single gang USA Backbox

British Style Keystone Faceplate

Part No.	Description	Dimension	Type
AD-KF-UK-01-180	1 Port British Faceplate	86mmx86mm	180℃
AD-KF-UK-02-180	2 Port British Faceplate	86mmx86mm	180℃
AD-KF-UK-04-180	4 Port British Faceplate	86mmx86mm	180℃
AD-KF-UK-01-45	1 Port British Faceplate	86mmx86mm	45℃
AD-KF-UK-02-45	2 Port British Faceplate	86mmx86mm	45℃
AD-KF-UK-04-45	4 Port British Faceplate	86mmx86mm	45℃
AD-KF-UK-BB-01	Single Gang British Backbox	87mmx87mm	



4 Port angled UK Faceplates



1/2 Port UK Faceplates



1/2 Port UK Faceplate



1Port Angled Faceplate with shutter



2 Port Angled Faceplate with shutters

■ Faceplate Solution

• European Style Keystone Faceplate

Part No.	Description	Dimension	Type
AD-KF-E-01-180	1 Port European Faceplate	80mmx80mm	180°C
AD-KF-E-02-180	2 Port European Faceplate	80mmx80mm	180°C
AD-KF-E-BB-01	Single Gang European Backbox	81mmx81mm	



European Faceplate
& Backbox

• Horizontal Keystone Faceplate

Part No.	Description	Dimension	Type
AD-KF-H-01-180	1 Port Horizontal Faceplate	70mmx114mm	180°C
AD-KF-H-02-180	2 Port Horizontal Faceplate	70mmx114mm	180°C
AD-KF-H-03-180	3 Port Horizontal Faceplate	70mmx114mm	180°C
AD-KF-H-BB-01	Single Gang Horizontal Backbox	72mmx115mm	



Horizontal
Faceplates

• Inserts For Keystone Faceplates

• Ordering information

Part Number	Description
AD-KFI-RCA-XX	RCA Inserts for Keystone Faceplate
AD-KFI-F-XX	F type Insert for Keystone Faceplate
AD-KFI-BNC-XX	BNC Insert for Keystone Faceplate
AD-KFI-TNC-XX	TNC Insert for Keystone Faceplate
AD-KFI-SC-XX	SC Insert for Keystone Faceplate
AD-KFI-ST-XX	ST Insert for Keystone Faceplate
AD-KFI-B-XX	Blank insert for Keystone Faceplate

• Color Code: WH-White IV-Ivory



F Insert
Assembly



SC Insert
Assembly



ST Insert
Assembly



RCA Insert
Assembly



Inserts for
Keystone
Faceplates



Blank
Insert



BNC Insert
assembly



Inserts without
Connector



BNC Insert
Assembly

Gang Frames

Features:

- Work with RJ45, BNC, ST, F connectors or others.
- Available in 1, 2 & 4 ports.
- Comes with mounting screws and outlet ID labels.
- Inserts can be snapped in and out individually.
- Modular design for future expansion.
- Apply UL94V-0 high-impact, fire-retardant ABS material.
- Complete system for flush (in-wall), modular furniture.



Gang Frame,
Faceplates
& inserts

Ordering information

Part No.	Description	Inside Space	Dimension
AD-GF-US	USA Style Gang Frame	75mm x 50mm	114mm x 70mm
AD-GF-UK-01	UK Style Single Gang Frame	50mm x 50mm	86mm x 86mm
AD-GF-E	European Style Gang Frame	50mm x 50mm	80mm x 80mm
AD-GF-UK-02	UK Style Double Gang Frame	50mm x 100mm	86mm x 146mm

Inserts for Gang Frames

Ordering information

Part No.	Description	Dimension
AD-GFI-B-XX	Blank insert for Gang Frame	25mm x 50mm
AD-GFI-K-02-XX	Dual Keystone jack for Gang Frame	25mm x 50mm
AD-GFI-F-02-XX	Dual F type adaptor for Gang Frame	25mm x 50mm
AD-GFI-BNC-02-XX	Dual BNC adaptor for Gang Frame	25mm x 50mm
AD-GFI-TNC-02-XX	Dual TNC adaptor for Gang Frame	25mm x 50mm
AD-GFI-SC-02-XX	Dual SC adaptor for Gang Frame	25mm x 50mm
AD-GFI-ST-02-XX	Dual ST adaptor for Gang Frame	25mm x 50mm
AD-GFI-K-01-XX	Single Keystone jack for Gang Frame	25mm x 50mm
AD-GFI-F-01-XX	Single F-type adaptor for Gang Frame	25mm x 50mm
AD-GFI-BNC-01-XX	Single BNC adaptor for Gang Frame	25mm x 50mm
AD-GFI-TNC-01-XX	Single TNC jack for Gang Frame	25mm x 50mm
AD-GFI-ST-01-XX	Single ST adaptor for Gang Frame	25mm x 50mm

Color Code: WH-White IV-Ivory



Single Gang
USA Gang
Frame



Double Gang
USA Gang
Frame



UK Gang Frame



European Gang
Frame



Din Insert



BNC Inserts



RCA Inserts



2 Port
Unloaded
Insert



SC Inserts



F Inserts



1 Port
Unloaded
Insert



Blank Insert



ST Inserts

Surface Mount Box & Cable Management Solution

■ Surface Mount Box

● Features:

- Houses any keystone jack available in the market.
- Secures the box to any surface, baseboard, and furniture.
- Mounts easily with supplied screws or double-sided adhesive tape.
- Provides labeling behind a transparent clip-on cover.
- Built in optional shutter door to keep the jack clean.
- Color icon to indicate data or voice port.
- Apply UL 94V-0 high-impact, fire-retardant ABS material.
- Dust covers for dust and dampness protection.

● Ordering information

Part No.	Description
AD-SMB-01	1 Port Surface Mount Box
AD-SMB-02	2 Port Surface Mount Box
AD-SMB-04	4 Port Surface Mount Box
AD-SMB-06	6 Port Surface Mount Box

Remarks: Mounting screw and adhesive backing included

■ Cable Management Panel

● Features:

- Manages cable on front and rear of racks for managing cable installations in an extremely neat appearance.
- Maintain cable bend radius.
- Available in both 1U and 2U options.
- Metal and plastic type as options.
- Large capacity duct for managing cables quickly.
- Mount to standard Rackmount 19" racks.

● Ordering Information

Part No.	Description	Dimensions
AD-RP(X)-M-FR-1U	1U cable management panel (Metal Type) with rings in front and in rear	1.8" x 19" 1U
AD-RP(X)-M-F-1U	1U cable management panel (Metal Type) with rings in front	1.8" x 19" 1U
AD-RP(X)-M-FR-2U	2U cable management panel (Metal Type) with rings in front and in rear	3.6" x 19" 2U
AD-RP(X)-M-F-2U	2U cable management panel (Metal Type) with rings in front	3.6" x 19" 2U
AD-RP(X)-P-F-1U	1U cable management panel (Plastic Type) with rings in front	1.8" x 19" 1U
AD-RP(X)-P-F-2U	2U cable management panel (Plastic Type) with rings in front	3.6" x 19" 2U
AD-DP(X)-M-FR-1U	1U Duct Space Panel (Metal Type)-with ducts in front and in rear	1.8" x 19" 1U
AD-DP(X)-M-F-1U	1U Duct Space panel (Metal Type)-with 1 duct in front	1.8" x 19" 1U
AD-DP(X)-M-FR-2U	2U Duct Space Panel (Metal Type)-with ducts in front and in rear	3.6" x 19" 2U
AD-DP(X)-M-F-2U	2U Duct Space Panel (Metal Type)-with 1 duct in front	3.6" x 19" 2U

(X)- Different options available for each type of cable management panel. Please contact Addison sales for the exact configuration of each option. Custom design is available for volume order quantity.



2 Port Surface Mount Box



1/2/4/6 Port Surface Mount Box



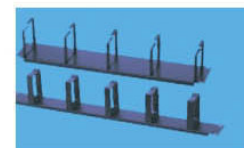
1 Port Surface Mount Box



1U & 2U Ring Panel (A Type)



1U & 2U Ring Panel (B Type)



1U & 2U Ring Panel (C Type)



1U & 2U Ring Panel (D Type)



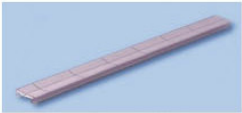
1U & 2U Space Panel

110 Connecting Hardwares

- Features:**
 - Meets and exceeds TIA/EIA 568-B standard.
 - Material UL listed 94V-O rated thermoplastic.
 - Accepts 22-24 AWG solid or stranded wire.
 - Accepts connecting blocks 3, 4 and 5 pair sizes.
 - Connecting blocks are 110 IDC type Phosphor Bronze termination.
 - Includes label identification.

Ordering Information

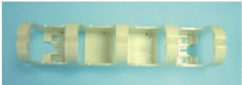
Part No.	Description
AD-110-WBP-200-2U	200 pairs 110 wiring block w/o legs, panel type in 2U
AD-110-WBP-100-1U	100 pairs 110 wiring block w/o legs, panel type in 1U
AD-110-WB-300	300 pairs 110 wiring block w/o legs
AD-110-WB-100	100 pairs 110 wiring block w/o legs
AD-110-WB-50	50 pairs 110 wiring block w/o legs
AD-110-WB-300L	300 pairs 110 wiring block with legs
AD-110-WB-100L	100 pairs 110 wiring block with legs
AD-110-WB-50L	50 pairs 110 wiring block with legs
AD-110-C5	5 pair wiring connector
AD-110-C4	4 pair wiring connector
AD-110-C3	3 pair wiring connector
AD-110WM	110 Wire management w/o legs
AD-110-WM-L	110 Wire management with legs
AD-110-WM-1U	110 Wire management w/o legs, panel type in 1U
AD-110LH	Designation label holder
AD-110DL	Designation label



Designation Label Holder With label



C3/C4/C5 Wiring Connector



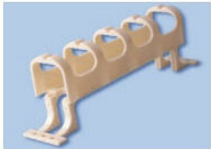
110 Wire Management w/o legs



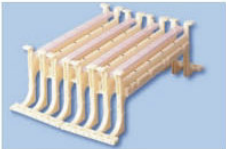
100PR Wiring Block w/o Legs



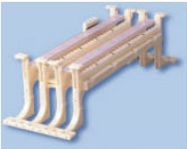
50PR Wiring Block w/o Legs



110 Wire Management with legs



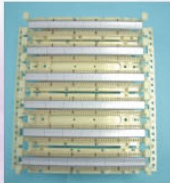
300PR Wiring Block with Legs



100PR Wiring Block with Legs



50PR Wiring Block with Legs



300PR Wiring Block w/o Legs

Telco Solution

Telco Multi-port Adaptor

Features:

- Converts 25 pair cable into a multi port work station.
- One 25 pair male or female connector can accommodate up to 12 modular jacks, depending on the pair count of the jack.
- Support USOC, 10 Base-T pin assignment scheme.

Ordering information

Part No.	Description	Size
AD-TMA-M-12-RJ11	Male Telco to RJ11 (6P4C)	12 Port
AD-TMA-F-12-RJ11	Female Telco to RJ11 (6P4C)	12 Port
AD-TMA-M-8-RJ12	Male Telco to RJ12 (6P6C)	8 Port
AD-TMA-F-8-RJ12	Female Telco to RJ12 (6P6C)	8 Port
AD-TMA-M-12-RJ45	Male Telco to RJ45 (8P4C)	12 Port
AD-TMA-F-12-RJ45	Female Telco to RJ45 (8P4C)	12 Port
AD-TMA-M-6-RJ45	Male Telco to RJ45 (8P8C)	6 Port
AD-TMA-F-6-RJ45	Female Telco to RJ45 (8P8C)	6 Port
AD-TMA-M-5-RJ48	Male Telco to RJ48 (10P10C)	5 Port
AD-TMA-F-5-RJ48	Female Telco to RJ48 (10P10C)	5 Port



6, 8 & 12 Port Telco Harmonicas/Multi-port Adaptor

Telco Hydra

Features:

- Converts 25 pair cable into a multi port assembly.
- One 25 pair male or female connector can terminate up to 12 wires, depending on the pair count of the jack.
- Suitable for EMI or crosstalk sensitive applications.

Ordering information

Part No.	Description	
AD-TH-M-12-RJ11-X	Male Telco to RJ11 (6P4C)	12 Wires
AD-TH-F-12-RJ11-X	Female Telco to RJ11 (6P4C)	12 Wires
AD-TH-M-8-RJ12-X	Male Telco to RJ12 (6P6C)	8 Wires
AD-TH-F-8-RJ12-X	Female Telco to RJ12 (6P6C)	8 Wires
AD-TH-M-8-RJ45-X	Male Telco to RJ45 (8P6C)	8 Wires
AD-TH-F-8-RJ45-X	Female Telco to RJ45 (8P6C)	8 Wires
AD-TH-M-6-RJ45-X	Male Telco to RJ45 (8P8C)	6 Wires
AD-TH-F-6-RJ45-X	Female Telco to RJ45 (8P8C)	6 Wires
AD-TH-M-5-RJ48-X	Male Telco to RJ48 (10P10C)	5 Wires
AD-TH-F-5-RJ48-X	Female Telco to RJ48 (10P10C)	5 Wires

X: S for Telco Straight & RA for Telco Angled Right & LA for Telco Angled Left



12 Wires Male Telco Hydra

Telco Assembly

Features:

- Terminates 25 pair cable with Telco connectors.
- Different Telco connector types (Telco Straight or Telco Right or Telco Left) for choice.

Ordering information

Part No.	Description
AD-TA-TRATRA-XXX	Telco Right Angled to Telco Right Angled
AD-TA-TLATLA-XXX	Telco Left Angled to Telco Left Angled
AD-TA-TSTS-XXX	Telco Straight to Telco Straight
AD-TA-TSTRA-XXX	Telco Straight to Telco Right Angled
AD-TA-TSTLA-XXX	Telco Straight to Telco Left Angled
AD-TA-TRATLA-XXX	Telco Right Angled to Telco Left Angled

XXX-

X- F for Feet and M for meters

YY- 03, 05, 07 etc



25PR Telco assembly

Category 5E/6 Patch Cord

Type		UTP	FTP
Conductor	Material	Stranded Plain Copper	Stranded Plain Copper
	Composition	7/0.2mm or 7/0.16mm	7/0.16mm
	Gauge	24 AWG/26AWG	26 AWG
Insulation		Non plenum: Polyolefin	Non plenum: Polyolefin
		Plenum: FEP	Plenum: FEP
Screening	Material	NIL	Overall Aluminium /Polyester
			Individual Screened
Drain Wire	Material	NIL	7/0.16 mm
Jacket	Material	PVC/FRPVC/LSZH	PVC/FRPVC/LSZH
RJ45	Material	8P 8C RJ45 Unshielded	8P 8C RJ45 Shielded
Applicable Standard		CAT3/CAT 5/CAT5E/CAT6	CAT3/CAT 5/CAT5E/CAT6
Wiring		T568A or T568B	T568A or T568B



UTP CAT5E Patch Cord

Ordering Code

Example: AD-CAT5UTP4P F003CM26A-01
 CAT 5 UTP 4 pairs 26 AWG Stranded,
 CM grade, 3 feet long, Yellow Color

AD - AAAAA - BBB-CCC-D-EEE-FFF-GG-HH

HH	Jacket Color 01-Yellow; 02-Blue, 03-Green, 04-White 05-Orange, 06-Purple, 07-Red, 08-Grey Color code ended with A-IMAC coloring (For example: 01A)
GG	Cable Gauge Size 24A -24 AWG, 26A- 26 AWG
FFF	Fire Performance Rating CM - Normal PVC, CM grade CMR- FRPVC , CMR Riser Grade CMP - FEP, CMP Plenum Grade FR - FRPVC, to IEC 332-3C LH - LSOH grade, to IEC 754-1, IEC 1034 P1/2
EEE	Length F003 - 3 Feet, F005 -5 Feet, F007 - 7 Feet, M001 - 1 Meter, M002 -2 Meter, M003 - 3 meter,
D	Length Unit F-Foot or M-Meter
CCC	No of cable pairs 4P- 4 pairs, 25P- 25 pairs
BBB	Cable Type Family UTP - Unscreened Cable FTP- Overall Screened Cable
AAAAA	Cable Standard CAT3/CAT5/CAT5E/CAT6



UTP CAT5E
long sleeve
Boot Patch cord



UTP CAT5E
Patch Cord



UTP CAT6 Patch Cord



FTP CAT5E Patch Cord

■ Patch Cord Solution

■ Cat 5E 110 Patch Cord

● Construction:

Cable Type CAT 5 or CAT 5E
 Connector Type 110 Connector or RJ 45 8 Port Plug
 Outer Jacket PVC/FRPVC/LSZH
 Applicable TIA/EIA 568A CAT 5/ CAT5E
 Standard

● Ordering Code

Example: AD-CAT5UTP4PF003CM26A-01-1A-4P
 CAT 5 UTP 4 pairs 26 AWG Stranded,
 CM grade, 3 feet long, Yellow Color
 110 to RJ 45 (T568A), 4 Prs

AD - AAAA - BBB-CCC-D-EEE-FFF-GG-HH-II-J
 Ordering Method is the same as for UTP patch cords
 except for the inclusion of the connector type as follows:

II - Connector Type

1A 110 to RJ45 (T568A)

1B 110 to RJ45 (T568B)

11 110 to 110

J-Number of pair termination 1P-1Pr, 2P-2Prs, 3P-3Prs, 4P-4Prs

■ Cable Assemblies

● Construction:

Cable Type CAT 1, CAT3, CAT5, CAT5E
 Connector Type D Sub 9, 15, 25 Connector; RJ 45 8 Port
 Plug; 50 pin Telco connectors; V35 connectors
 Outer Jacket PVC/FRPVC/LSZH
 Applicable IEEE 802.3 10 Base-T
 Standard IEEE 802.5 Token Ring
 TIA/EIA 568-A

● Ordering Code

Example: AD-2M3FCAT3UTP25PF003CM26A - 01
 CAT 3 UTP 25 pairs 26 AWG Stranded,
 CM grade, 3 feet long, Yellow Color
 DB 15 Male to DB 25 Female

AD - AA-BB-CCCC - DDD-EEEE-F-GGG-HHH-II-JJ

JJ Jacket Color
 01-Yellow; 02-Blue, 03-Green, 04-White
 05-Orange, 06-Purple, 07-Red, 08-Grey
 Cable Gauge 24A - 24 AWG, 26A - 26 AWG

HHH Fire Performance Rating
 CM - Normal PVC, CM grade
 CMR- FRPVC, CMR Riser Grade
 CMP - FEP, CMP Plenum Grade
 FR - FRPVC, to IEC 332-3C
 LH - LSOH grade, to IEC 754-1, IEC 1034 P1/2

FGG Length
 F003 - 3 Feet, F005 - 5 Feet, F007 - 7 Feet,
 M001 - 1 Meter, M002 - 2 Meter, M003 - 3 meter,

F Length Unit
 F-Foot or M-Meter

EEEE No of cable pairs
 4P- 4 pairs, 25P- 25 pairs
 50P- 50 pairs, 100P-100pairs

**DDD* Cable Type Family
 UTP - Unscreened Cable
 FTP- Overall Screened Cable

**CCCC* Cable Standard
 CAT1/CAT3/ CAT5 / CAT5E

BB Right Connector Type
 1-Db 9, 2-Db 15, 3-Db 25, 4-50 pin Telco
 5- RJ 45, 6- V35, M-Male, F-Female

AA Left Connector Type
 1-Db 9, 2-Db 15, 3-Db 25, 4-50 pin Telco
 5- RJ 45, 6- V35, M-Male, F-Female



1, 2 & 4PR Connector



CAT5E 110 Patch Cord



CAT5E 110 1PR
patch cord



CAT5E 110-110
4PR Patch Cord

Color Coded Boots

Features

- Two - piece version allows removing from the existing terminated or molded patch cords at any time needed.
- Flexible strain relief could be adjusted to fit round cable with diameters ranging from 5.0 to 6.5mm.
- Fits over RJ-45 connectors (standard body).
- Boots could be offered with different color for matching with color of the patch cords and patch panel system.

Ordering Information

Part No.	Description	Cable O/D
AD-SR1-50-XX	One Piece Strain Relief for RJ45 plug	5.0mm
AD-SR1-55-XX	One Piece Strain Relief for RJ45 plug	5.5mm
AD-SR1-60-XX	One Piece Strain Relief for RJ45 plug	6.0mm
AD-SR1-65-XX	One Piece Strain Relief for RJ45 plug	6.5mm
AD-SR1-F-XX	One Piece Strain Relief	Flat cable
AD-SR2-60-XX	Two Piece Strain Relief for RJ45 plug	6.0mm
AD-SR2S-60-XX	Snap On Strain Relief for RJ45 plug	6.0mm

XX= Color Code: BK-Black RD-Red GN-Green
YL-Yellow BL-Blue WH-White
OR-Orange GY-Grey IV-Ivory



Color Coded boots



Snap On boot

Modular Plug

Features:

- Increased flexibility: Fit with stranded or solid cable.
- Eight- conductor modular plug works with round cable.
- Use with standard termination tools.
- Load bar eases wire insertion while maintaining 1/2" twist requirements.
- Clear plastic cover keeps the conductor colors/positions visible for termination.

Physical Specifications

- Beryllium Copper Contact: 3 to 50 micro inch (μ ") gold plated pins.
- Insertion Life Cycle: 1,000 cycles (minimum)

Electrical Specifications

- Insulation Resistance: 500M. Ω
- Dielectric Withstand Voltage: 500V AC

Ordering information

Part No.	Description
AD-MP-RJ11-44-AB	4P4C RJ-11 plug
AD-MP-RJ12-64-AB	6P4C RJ-12 plug
AD-MP-RJ12-66-AB	6P6C RJ-12 plug
AD-MP-RJ45-88-AB	8P8C RJ-45 plug
AD-MP-RJ45-88S-AB	8P8C RJ-45 plug, shielded



One Piece Boot



- One Piece Boot
- Two Piece Boot
- Snap On Boot



Transparent Modular Plug



RJ45 Color Plug



RJ45 Shielded Plug

A-Gold plating option
3-3 μ " ; 6-6 μ " ; 15-15 μ " ; 30-30 μ " ; 50-50 μ "
B-Body option
N- Normal body S- Short body

Assignments

Identification	Color Code	T568A Pin Assignment	T568B Pin Assignment
Pair 1	White/Blue	5	5
	Blue	4	4
Pair 2	White/Orange	3	1
	Orange	6	2
Pair 3	White/Green	1	3
	Green	2	6
Pair 4	White/Brown	7	7
	Brown	8	8

Fiber Solution

Fible Optic Connector

Features:

- 2.5mm Zirconia ferrule with wide range of hole size (125 μ m - 128 μ m) for choice.
- Suitable for Single-mode or Multi-mode Fiber Cable.
- Pre-radiused ferrule give fast polishing.
- Wide range of the boot colors and diameter for selection.
- APC type available for Single-mode.
- Low insertion loss & high return loss.

Physical Specifications

- Fiber Cable Type: 3.0 mm jacketed or 900 μ m tight-buffered.
- Fiber Compatibility: 62.5/125 μ m and 50/125 μ m Multimode; 9/125 μ m Single-mode.

Electrical Specifications:

- Insertion Loss: < 0.34 dB typical; < 0.15 dB Single Mode; < 0.3 dB Multimode
- Return Loss: -50 dB Single-mode(Typical)
 - > 30 dB - P C Polishing
 - > 40 dB - SPC Polishing
 - > 50 dB - UPC Polishing
 - > 60 dB - APC Polishing

Ordering Information

AD-FC- ☐ ☐ ☐ ☐ ☐

Connector Type :

- | | | | |
|------------|------------------|------------|-------------------|
| 1 = FC/PC | 5 = ST | 9 = E-2000 | 13-SMA905 |
| 2 = FC/APC | 6 = LC | 10 - FDDI | 14-SMA906 |
| 3 = SC/PC | 7 = MT-RJ/male | 11-MU | 15-D4 |
| 4 = SC/APC | 8 = MT-RJ/female | 12-ESCON | 16-DIN 47256(LSA) |

Mode Type :

- 1 = Single mode
- 2 = Multi-mode

Fiber size:

- 1=125 μ m
- 2=126 μ m
- 3=127 μ m
- 4=128 μ m

Type :

- 1 = One Piece Type
- 2 = Typical Type

Cable Boot Type :

- 1 = For 0.9 mm cable
- 2 = For 1.6 mm cable
- 3 = For 1.8 mm cable
- 4 = For 2.0 mm cable
- 5 = For 2.4 mm cable
- 6 = For 3.0 mm cable



ST Connector



SC Connector



SC Connector Duplex



FC Connector



APC Connector



MTRJ Connector



LC Connector



FC D-Shape adapter



FC APC D-Shape adapter



Escon Connector

Fible Optic Adaptors

Features:

- Low insertion Loss.
- Low Back Reflection.
- Compliant with JIS, IEC, Bellcore Standard.
- Excellent Concentricity.
- Convenience and ease of handling.

Physical Specifications

- Fiber Cable Type: 3.0 mm jacketed or 900 μ m tight-buffered.
- Fiber Compatibility: 62.5/125 μ m and 50/125 μ m Multimode; 9/125 μ m Single-mode.

Electrical Specifications:

- High Durability: 0.2dB loss after 500 cycles.
- Insertion Loss: 0.15dB (Singlemode), 0.2dB (Multimode).

Ordering Information

AD-FA-

In/Out Connector Type:

- 1 = FC/PC

2 = FC/APC

3 = SC/PC

4 = SC/APC
- 5 = ST

6 = LC

7 = MTRJ

8 = SC-ST
- 9 = FC-ST

10 = FDDI

11 = DIN

12 = ESCON
- 13 = SC-FC

14 = SC-LC

15 = FDDI-ST

16 = ESCON-ST

Sleeve Type:

- 1 = Single mode Zirconia Sleeve
- 2 = Multi-mode Zirconia Sleeve
- 3 = Multi-mode Phosphor Bronze Sleeve

Cord Type:

- 1 = Simplex
- 2 = Duplex

Type:

- 1=Plastic
- 2=Metal Square Type (FC)
- 3=Metal D Type (FC)
- 4=Metal Thread Type (ST)



ST Adaptor



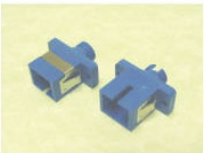
FC Adaptor



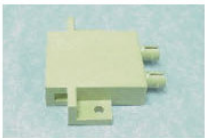
SC Adaptor



MTRJ Adaptor



SC-FC adapter



FDDI-ST adapter



SC-ST adapter



LC Adaptor



FC-ST adapter



ESCON Adaptor



APC Adaptor

Fiber Solution

Fiber Patch Cord

Features:

- Wide range of fiber type, cable type, connector type and ferrule types for selection.
- Wide range of the cord colors for selection.
- Low insertion Loss.
- Compliant with JIS, IEC, Bellcore Standard.

Physical Specifications

- Cladding Diameter: 125 μm .
- Core Diameter: 50/62.5 μm (Multimode), 9 μm (Single-mode).
- Minimum Bend Radius: 10 x total diameter.

Electrical Specifications

- Attenuation: For Multimode <3.75 dB/Km at 850 nm; <1.5 dB at 1,300 nm; For Single Mode <0.4 dB/Km at 1310 nm; <0.3 dB at 1550 nm.
- Bandwidth: 200 MHz/km at 850 nm; 600 MHz at 1,300 nm.
- Insertion Loss: <0.34 dB typical; <0.15 dB Single Mode; <0.3 dB Multimode.
- Return Loss: -50 dB Single-Mode

Construction:

Fibre	Single Mode/Multimode
Cable Type	Simplex/Duplex/Breakout
Connector Type	ST/SC/FC/SMA905 or 906/ D4/BICONIC/FDDI/MTRJ/LC
Ferrule	Ceramic/Stainless Steel/Polymer
Jacket	PVC/FRPVC/LSZH
Applicable Standard	EIA Bellcore Compliant

Ordering Code

Example: AD-11S160F003COR-01
Simplex, ST to ST connector. Multimode, 3 feet long
Ceramic Ferrule, OFNR, Yellow Color

AD-A-B-CCCC-DD-E-FFF-G-HH-II

II	Jacket Color
	01-Yellow; 02-Blue, 03-Green, 04-White
	05-Orange, 06-Purple, 07-Red, 08-Grey
HH	Fire Performance Rating
	ON - Normal PVC, OFN grade
	OR- FRPVC, OFNR Riser Grade
	OP - FEP, OFNP Plenum Grade
	FR - FRPVC, to IEC 332-3C
	LH - LSOH grade to IEC 754-1, IEC 1034 P1/2
G	Ferrule Type
	C - Ceramic, S- Stainless Steel, P- Polymer
FFF	Length
	F003 - 3 Feet, F005 - 5 Feet, F007 - 7 Feet,
	M001 - 1 Meter, M002 - 2 Meter, M003 - 3 meter,
E	Length Unit
	F- Foot, M-Meter
DD	Fibre Type
	90- Single Mode 9/125 μm
	60- Multimode 62.5/125 μm
	50- Multimode 50/125 μm
CCCC	Cable Type Family
	S1-Simplex, D1-Duplex Zip
	D2- Duplex Flat, P1 - 1 Fibre Pigtail
	P4 - 4 Fibre Pigtail, P6 - 6 Fibre Pigtail
	MTxxx- Tight Buffer Distribution, Fibre Number
	BTxxx- Tight Buffer Breakout, Fibre Number
B	Right Connector Type
	1-ST, 2-SC, 3-FC, 4-SMA905/906, 5-D4
	6-BICONIC, 7-FDDI, 8-MTRJ, 9-LC
A	Left Connector Type
	1-ST, 2-SC, 3-FC, 4-SMA905/906, 5-D4
	6-BICONIC, 7-FDDI, 8-MTRJ, 9-LC



SC/APC Fiber Optical Patch Cord



ST/ST Fiber Optical patch cord



SC/SC Fiber Optical patch cord



SC/SC Duplex Fiber Optical patch cord



FC/FC Fiber Optical patch cord



ST/ST Duplex Fiber Optical patch cord



FC/APC Fiber Optical patch cord

Wall Mount Fiber Termination/Splicing Box

Features

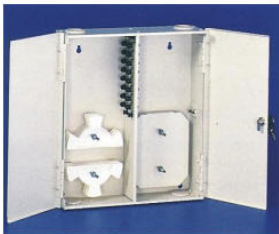
- Compact design with two compartments in one box, one for incoming fiber cable and pigtails for splicing, and the other is for patch cord terminations.
- Removable chassis loaded with heavy duty adaptor panels and splice trays (optional).
- Available for FC, SC, and ST adaptor.
- Metal case with epoxy finish coating.
- Available in beige or black color.
- Dust-Proof grommets sealed for cable holes.
- 6 adaptors per panel.
- Metal door with optional lock for security.
- Modular splicing organizer with 6 or 12 splicing per module.

Ordering Information

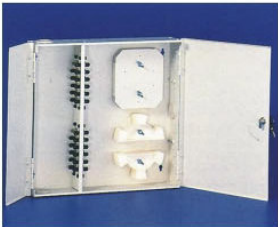
Part No.	Description
AD-WFTB-06S	6 port Wall Mount Fibre Termination/Splicing box
AD-WFTB-12S	12 port Wall Mount Fibre Termination/Splicing box
AD-WFTB-16S	16 port Wall Mount Fibre Termination/Splicing box
AD-WFTB-24S	24 port Wall Mount Fibre Termination/Splicing box
AD-WFTB-48S	48 port Wall Mount Fibre Termination/Splicing box



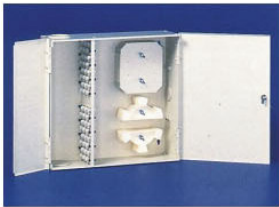
12Port Wall Mount
Fiber Termination &
Splicing Box



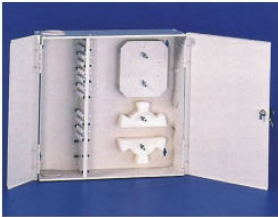
16Port Wall Mount
Fiber Termination &
Splicing Box



24Port Wall Mount
Fiber Termination &
Splicing Box



36Port Wall Mount
Fiber Termination &
Splicing Box



48Port Wall Mount
Fiber Termination &
Splicing Box

■ Fiber Solution

■ 19" 1U Rackmount Fiber Termination Box

● Features:

- One enclosure accommodates 12, 16, 24, port terminations.
- Adaptor panels are mounted on slidable chassis for ease of installation and maintenance.
- Front access with multiple stackable units for high fiber count installation.
- Available for FC, SC, and ST adaptor panels.
- Metal case with epoxy coating.
- Providing direct termination for fibre cable in one rack space.
- Pre-loaded patch panels available.
- Slide out features as options.

● Ordering Information

Part No.	Description
AD-RFTB-12-1U	12 Port 1U Rackmount Fiber Termination box w/o Splicing
AD-RFTB-16-1U	16 Port 1U Rackmount Fiber Termination box w/o Splicing
AD-RFTB-24-1U	24 Port 1U Rackmount Fiber Termination box w/o Splicing



24 Port Rackmount
Fiber Termination Box



6Port Rack
Mount Fiber
Termination
& Splicing Box

■ 19" Rackmount Fiber Termination & Splicing Box

● Features:

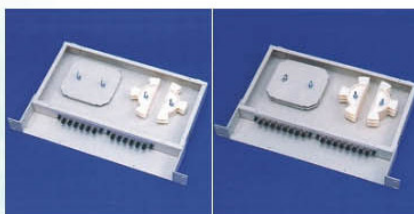
- 19" standard rack, suitable for incoming fibre cable and pigtail fusion splicing.
- Available for 12, 16, 24, port terminations.
- Modular adaptor panels for ease of installation and maintenance.
- Available for FC, SC, and ST adaptor panels.
- Metal case with epoxy coating.
- Rubber grommets sealed for cable holes.
- Termination of fibre cable in one rack space.
- Pre-loaded patch panels available.

● Ordering Information

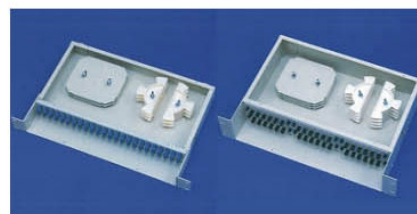
Part No.	Description
AD-RFTB-12S-1U	12 Port 1U Rackmount Fiber Termination/Splicing box (44.5mm x 410mm x 280mm)
AD-RFTB-16S-1U	16 Port 1U Rackmount Fiber Termination/Splicing box (44.5mm x 410mm x 280mm)
AD-RFTB-24S-1U	24 Port 1U Rackmount Fiber Termination/Splicing box (44.5mm x 410mm x 280mm)
AD-RFTB-36S-2U	36 Port 2U Rackmount Fiber Termination/Splicing box (89mm x 483mm x 280mm)
AD-RFTB-48S-2U	48 Port 2U Rackmount Fiber Termination/Splicing box (89mm x 483mm x 280mm)



48Port Rack
Mount Fiber
Termination
& Splicing Box



12/16Port Rack Mount Fiber
Termination & Splicing Box



24/36Port Rack Mount Fiber
Termination & Splicing Box

■ 19"/23" Standard Rackmount Fiber Termination/Splicing Box

● Features:

- 19"/23" standard rack, suitable for incoming fibre cable and pigtail fusion splicing.
- Available for 24 and 48 port terminations.
- Stackable modular fusion splicing organizer, 6/12 splicing per module.
- Modular adaptor panels for ease of installation and maintenance.
- Available for FC, SC, and ST adaptor panels.
- Metal case with epoxy coating.
- Pre-loaded patch panels available.

● Ordering Information

Part No.	Description
AD-RFTB-24S-H	24 Port 19"/23" Rackmount Fiber Termination/Splicing box (220mm x 430mm x 375mm)
AD-RFTB-48S-H	48 Port 19"/23" Rackmount Fiber Termination/Splicing box (330mm x 430mm x 375mm)



24 Port Standard Rackmount Termination/Splicing Box



48 Port Standard Rackmount Termination/Splicing Box

■ 19"/23" Low Profile Rackmount Fiber Termination/Splicing Box

● Features:

- 19"/23" standard rack, suitable for incoming fibre cable and pigtail fusion splicing.
- Available for 24, 48, 72 & 96 port terminations.
- Stackable modular fusion splicing organizer, 12 splicings per module.
- Modular adaptor panels for ease of installation and maintenance.
- Available for FC, SC, and ST adaptor panels.
- Metal case with epoxy coating.
- Pre-loaded patch panels available.

● Ordering Information

Part No.	Description
AD-RFTB-24S-L	24 Port 19"/23" Rackmount Fiber Termination/Splicing box (176mm x 430mm x 375mm)
AD-RFTB-48S-L	48 Port 19"/23" Rackmount Fiber Termination/Splicing box (220mm x 430mm x 375mm)
AD-RFTB-72S-L	72 Port 19"/23" Rackmount Fiber Termination/Splicing box (263mm x 430mm x 375mm)
AD-RFTB-96S-L	96 Port 19"/23" Rackmount Fiber Termination/Splicing box (305mm x 430mm x 375mm)



24 Port Low Profile Fibre Termination/Splicing Box



48 Port Low Profile Fibre Termination/Splicing Box



96 Port Low Profile Fibre Termination/Splicing Box

■ Adaptor Panel

● Features:

- 6 Port modular design.
- Aluminium Plates.
- Available in 4, 6 and 8 ports.
- Fit for ST,SC FC adaptors.
- Available in 1 x 6 and 2 x 3 construction for choice.

● Ordering Information

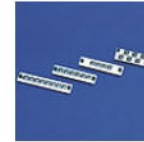
Part No.	Description
AD-AP-ST-04	4 Port ST Adaptor Panel
AD-AP-ST-06	6 Port ST Adaptor Panel
AD-AP-ST-08	8 Port ST Adaptor Panel
AD-AP-SC-04	4 Port SC Adaptor Panel
AD-AP-SC-06	6 Port SC Adaptor Panel
AD-AP-SC-08	8 Port SC Adaptor Panel
AD-AP-FC-04	4 Port FC Adaptor Panel
AD-AP-FC-06	6 Port FC Adaptor Panel
AD-AP-FC-08	8 Port FC Adaptor Panel
AD-AP-FC-06M	6 (2X3)Port FC Adaptor Panel
AD-AP-SC-06M	6 (2X3)Port SC Adaptor Panel



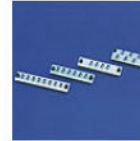
SC Duplex
Adaptor
Module



FC FC D
Shaped
Adaptor
Module



FC FC
Adaptor
Module



ST ST
Adaptor
Module



SC SC
Adaptor
Module

■ Protector Sleeve

● Features:

- Moisture resistant.
- Shrink temperature of 90 deg.
- Tension member made of steel rod.
- Mass Fusion Sleeve fit for 4 to 12 ribbon fibers.

● Ordering Information

Part No.	Description
AD-FSPS	Fusion Splice Protector Sleeve
AD-MFPS	Mass Fusion Protector Sleeve (for 4 12 ribbon fiber)



Protector
Sleeve

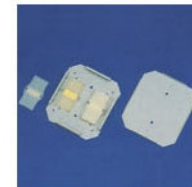
■ Cable Routing Spool

● Features:

- Stackable design.
- Flame retardant material.
- Minimum bending radius of 42mm.

● Ordering Information

Part No.	Description
AD-CRS	Cable Routing Spool



Cable Routing
Spool

■ Splicing Tray

● Features:

- Stackable design.
- Flame retardant material.
- Minimum bending radius of 42mm.

● Ordering Information

Part No.	Description
AD-FST-12S	12 Fiber Splicing Tray (11mm x 125mm x 140mm), for AD-WFTB-12/24/48S & AD-RFTB-12/16/24/36/48S-1/2U
AD-FST-12L	Fiber Splicing Tray (11mm x 160mm x 240mm), for AD-RFTB-24/48/72/96S-L & AD-RFTB-24/48S-H



Splicing Tray

5-Pair Termination Tool

Features:

- Pushes just once for five complete twisted-pair terminations for both cable and cross-connect side of the block.
- Performs multipair terminations on both sides of a 110-style connector block.
- Heavy-duty metal construction.

Ordering Information

Part No	Description
AD-IT5-110	5 Pair Termination Tool



5-Pair Termination Tool

IDC Punch Down Tool

Features:

- For Keystone jack and IDC panel.
- Terminates wire on both cable and cross-connect sides of 110 connecting blocks.
- Terminates and cuts in one motion.
- Variety of interchangeable blades.
- Its spring-loaded and adjustable impact feature allows working with wires of various thickness.
- Heavy-duty metal construction.
- Available for 110 type and Krone type.

Ordering Information

Part No.	Description
AD-110-IT-M	Metal Type 110 Punch Down tool
AD-K-IT-M	Metal Type Krone Punch Down tool
AD-110-ITB	Replacement blade for 110 Type
AD-K-ITB	Replacement blade for Krone type
AD-110-ITS-P	Plastic 110 tool with stripper.
AD-K-ITS-P	Plastic Krone tool with stripper



Metal Type 110 Punch Down tool



Plastic 110 tool with stripper.



Metal Type 110 Punch Down tool



Metal Type Krone Punch Down tool

■ Tool & Tester Solution

■ Modular Crimping Tool

● Features:

- Includes crimping, stripping & cutting.
- Heavy duty metal construction.
- Providing straight motion with modular holder. Modular holders which are made of light weight & durable Al-Zn alloy.
- Suitable for both stranded and solid UTP/STP wires and cables.

● Ordering Information

Part No	Description
AD-CT-46	Crimping tool for 4 & 6 position plug.
AD-CT-68	Crimping tool for 6 & 8 position plug
AD-CT-DEC68	Crimping tool for DEC 6 & 8 position plug
AD-CT-4	Crimping tool for 4 position plug
AD-CT-6	Crimping tool for 6 position plug
AD-CT-8	Crimping tool for 8 position plug
AD-CT-10	Crimping tool for 10 position plug
AD-CT-BT6	Crimping tool for BT 6 position plug
AD-CT-468	Crimping tool for 4 ,6 & 8 position plug
AD-CT-468R	Crimping tool for 4 position, 6 position and 8 position plug (with Ratchet)



Single Type Crimping Tool



Duplex Type (4/6 or 6/8 P) Crimping Tool



Triple Type 4/6/8 P Crimping Tool

■ UTP Cable Stripper

● Features:

Stripping in 3 circles to extract the jacket of UTP cable
For round or flat multicore cables with diameter from 3.5mm to 9mm.
For irregular shape of the insulation, stripping could be done by the V and U GUIDE.

● Ordering Information

Part No	Description
AD-110-UCS	Universal UTP Cable Stripper



BT Crimping Tool



UTP Cable Stripper

■ Tester

● Features:

- A low cost & portable cable tester.
- Provides reliable testing for premises cabling & patch cords.
- Tests for both shielded and unshielded patch cords.
- Runs on one 9V battery.
- Equipped with both RJ-45 & BNC connectors.
- Show status for Open, Short, Reversal wires and cross pairs.

● Ordering Information

Part No	Description
AD-CT-PR	Pair to Pair Network cable tester
AD-CT-PN	Pin to Pin Network cable tester



BNC RJ 45 Cable Tester

Open Rack

Features

1. Attractive appearance.
2. There are 3 types of Open Rack in sizes ranging from 28U to 46U.
3. Maximum Load Capacity : 440 lbs (200Kg).
4. It is fabricated entirely from heavy Steel for good stability.
5. Base Holes for Floor installation (A type) and Base Installation (B type).
6. Side Holes per each frame used for the passage of cables in the event of interconnecting of Racks.
7. 3 to 12 Interconnecting Holes per each frame for row interconnecting purposes.
8. Face Mounting Holes meet the EIA/TIA standard.
9. Mounting Holes on the Rear Channel used for fixing cables and accessories.

General Information

- A Type (Floor-Mounting Format) . Standard Configuration recommended if the access floor is well established.
- B Type (Free-Standing Format) With the addition of Base, it is fit when many cables have to be arranged through Cable Tray .
- C Type (Mobile-Format) With the addition of Base and Casters, it is fit for easy access to the equipment.



Ordering Information

Part No.	Unit (U)	Overall Height		W550/19"		Weight		Frame Plate
		MM	INCHES	DEPTH (D)	TYPE	kg	lbs	
AD-OR-35A-2235	46U	2200	86.61	350	A	26	57	option
AD-OR-35A-1835	37U	1800	70.86	350		23	50	option
AD-OR-35A-1435	28U	1400	55.11	350		20	44	option
AD-OR-35B-2260	46U	2250	88.58	600	B	35	77	option
AD-OR-35B-1860	37U	1850	72.83	600		32	70	option
AD-OR-35B-1460	28U	1450	57.08	600		29	64	option
AD-OR-35C-2260	46U	2285	89.96	600	C	81	81	option
AD-OR-35C-1860	37U	1885	74.21	600		74	74	option
AD-OR-35C-1460	28U	1458	58.46	600		68	68	option

Standard items include Frame L/R, Top & Bottom Brackets together with Cage Nuts / Screws.
Optional items include Base Plate, Base Moulding and Casters/Leveling feet.

Rack Cabinet

Features

- Standard components include Top & Bottom Base, 4 Frames, Top Panel, 2 Side Panels, Rear Door, 5 Cable Tie Bars (for 37U or higher), Mounting Hardware Kit, and Leveling Feet.
- Made of high tensile strength Die Castings, Aluminum Extrusions and Aluminum Sheet.
- Having removable side panels for easy access or for interconnecting purposes.
- Standard color for the cabinet is Light Beige or Dark Beige. Custom colors are available.



■ Rack & Cabinet Solution

● General Information

There are three types of Rack Cabinets which is designed for different installation purposes.

A Type (Floor Mounting Format) A standard configuration used where Access Floor is established.

B Type (Free Standing Format) It has Base Cable Tray at the bottom part and it serves as the substitute for Access Floor.

C Type (Mobile Format) With the wheels at the bottom, it is easy for moving.

● Standard Components

- Top & bottom Base.
- Basic Frame.
- Top and Side Panel.
- Rear Door can be easily detached with the Spring Pin Hinges. The Ventilation Holes are in the top and bottom of the rear door. Air Filter Units are installed in both areas.
- Front Door has option of Flexi Glass, Steel, or Safety Glass which are right-hand hinged normally.
- Eye Bolt Holes are ready by Knock-out-punch on the Top Cover Panel.
- Cable tie Bars and Accessory Kit.
- Rack Fixing Bracket is optional for A & C Type. But basic for B Type. This prevents Rack from shaking and falling down by vibration or external shock.

■ EMI Shielded Rack Cabinets

● Features

- The equipment inside the Shielded Rack will be protected from the outer sources of EMI, and the possible EMI from the internal devices will be blocked by tight sealed structure of the cabinet.
- The interior Aluminium is chromated. Steel sheet is Zinc Galvanized and coated separately.
- Designed on the basis of standard Rack Cabinet.
- Steel Door / Acryl Door as option.

● Standard components included

- Side conductive Gasket inserted along the 4 side groove of the side panel provides tight contact with the body.
- Conductive Mesh Filter for both EMI blocking and air filtering.
- Door Conductive Gasket provides a tight contact on the cabinet body.
- Conductive Rubber can be trimmed by the volume of the cable.
- Side Panel Latch (Zinc Die cast) blocks the EMI through the mounting hole.
- Honeycomb Air Filter as an option for the EMI Shielded.

■ Dustproof Rack Cabinets.

● Features

- Designed on the basis of standard Rack Cabinets.
- Dustproof Rack Cabinet is used in the place where there are lots of dust, such as production lines to protect the inside equipment.
- Steel Door / Acryl Door as option.

● Standard components

- Side Elastic Gasket runs along the 4 side of groove on the side panels.
- Urethane Air Filter which is washable.
- Door Elastic Gasket provides a tight seal of the body.
- Urethane Foam.
- Rear Door.

● Ordering Information

AD-FC-AAA-BCC-DDE- (R)(W)

AAA	B76 600 mm width 19" (For standard communication equipment)		
	B77 700 mm width 19" (For network devices with many cables)		
	B73 700 mm width 23" (For switching equipment)		
BCC	A21-A type 2165mm	B22- B type 2250mm	C22-C type 2200mm
	A19-A type 1965mm	B20-B type 2050mm	C20-C type 2000mm
	A17-A type 1765mm	B18-B type 1850mm	C18-C type 1800mm
	A15-A type 1565mm	B16- B type 1650mm	C16-C type 1600mm
	A13-A type 1365mm	B14- B type 1450mm	C14-C type 1400mm
	A11-A type 1165mm	B12- B type 1250mm	C12-C type 1200mm
	A09-A type 965mm	B10- B type 1050mm	C10-C type 1000mm
	A07-A type 715mm	B08- B type 800mm	C07-C type 750mm



EMI Shielded Rack Cabinets



Dustproof Rack Cabinets.



Dustproof Rack Cabinets.(Double Door Opening)

DD 90-900mm
75-750mm
60-600mm

E S Type X=76 (To secure rear wiring space between Panel Mounting Rails
And Front Door)

L Type X=146 (To secure front wiring space between Panel Mounting Rails
and Front Door)

X represents the space between the mounting frame and front door.

R- Rear mounted Frame (Strongly recommended for flexibility)

W W1-EMI Shielded

W2-Dustproof

Rack Accessories

Ordering Information

Part No.	Rack	Way
AD-RA-P20-110	37U	20Way
AD-RA-P14-110	28U	14Way
AD-RA-P10-110	19U	10Way
AD-RA-P06-110	13U	6Way



Power Strip Unit- 110V
For over 6 ways with 30A/120V
circuit breaker.

Part No.	Rack	Way
AD-RA-P20-220	37U	20Way
AD-RA-P14-220	28U	14Way
AD-RA-P10-220	19U	10Way
AD-RA-P06-220	13U	6Way



Power Strip Unit- 220V
For over 6 ways 19" Rack with
30A/220V circuit breaker.

Part No.	Rack	Way
AD-RA-P19-125	41U	19Way
AD-RA-P13-125	28U	13Way
AD-RA-P8-125	13U	8Way



Power Strip Unit-110V
*For 8Way 19" Rack
15A/125V

Part No.	Rack	Way
AD-RA-P19-250	41U	19Way
AD-RA-P13-250	28U	13Way
AD-RA-P8-250	13U	8Way



Power Strip Unit-220V
*For 8Way 19" Rack
*16A/250V

Part No.	Rack
AD-RA-FAU-02	2Fan
AD-RA-FAU-03	3Fan



AC Fan Unit
AC 110V (0.14A) / 220V (0.07A) 50 / 60Hz

Part No.	Rack
AD-RA-FAU-04	4Fan
AD-RA-FAU-06	6Fan



***19" Fan Unit - 4, 6 Fan**
*AC 110V (0.14A) / 220V (0.07A) 50 / 60Hz

Part No.	Remark
AD-RA-T-110	110V
AD-RA-T-220	220V



Thermostat
10 ~ 60°C / 50 ~ 40°F

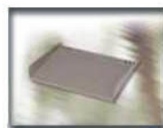
Rack & Cabinet Solution

Part No.
AD-RA-CTB



Cable Tie Bar
*Material : Aluminium & Steel

Part No.
AD-RA-LSS



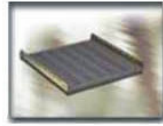
Light duty Support Shelf
*Material : Steel 1.2t
*Rated : 30kg / 65lbs

Part No.
AD-RA-GAS



Guide Angle - S Type
For S Type Floor Plan
*Material : Zinc Plated, Steel 2.0t
*Rated : 80kg / 180lbs

Part No.
AD-RA-HSS



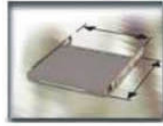
Heavy Duty Support Shelf
*Slotted weight support shelf
*Material : Steel 2.0t
*Rated : 50kg / 110lbs

Part No.
AD-RA-GAL



Guide Angle - L Type
For L Type Floor Plan
*Material : Zinc Plated, Steel 2.0t
*Rated : 80kg / 180lbs

Part No.
AD-RA-SSS



Slide Type Support Shelf
Material : Steel 2.0t
*14" Slide Rails
*Rated : 50kg / 110lbs

Part No.
AD-RA-GAF



Guide Angle - F Type
For holding up the front of 19" equipment
*Material : Zinc Plated, Steel 2.0t
*Rated : 40kg / 90lbs



Blank Panel Steel
*19" Front Panel : Solid and Ventilated Format
*Steel 1.2t
*Size : 1U to 6U



Blank Panel Aluminum
*19" Front Panel : Solid and Ventilated Format
*AL 5052 2.5t

Flatted	Size	Ventilated
AD-RA-BSF-01	1U	AD-RA-BSV-01
AD-RA-BSF-02	2U	AD-RA-BSV-02
AD-RA-BSF-03	3U	AD-RA-BSV-03
AD-RA-BSF-04	4U	AD-RA-BSV-04
AD-RA-BSF-05	5U	AD-RA-BSV-05
AD-RA-BSF-06	6U	AD-RA-BSV-06

Flatted	Size	Ventilated
AD-RA-BAF-01	1U	AD-RA-BAV-01
AD-RA-BAF-02	2U	AD-RA-BAV-02
AD-RA-BAF-03	3U	AD-RA-BAV-03
AD-RA-BAF-04	4U	AD-RA-BAV-04
AD-RA-BAF-05	5U	AD-RA-BAV-05
AD-RA-BAF-06	6U	AD-RA-BAV-06

Part No.	Size
AD-RA-NBP-01	1U
AD-RA-NBP-02	2U



Network Blank Panel
*Oval hole cut out panel for Network
*Material : Steel 1.2t and Rubber Grommet.
*Size : 1U and 2U

Part No.	Material
AD-RA-MPS-01	Steel
AD-RA-MPA-01	Aluminium



Monitor Panel - Steel/Aluminium
9U Panel - Steel 1.2t / AL5052 2.5t
*14" Bezel-ABS
*Material : Steel and Aluminium

Part No.	Size
AD-RA-RRP-01	1U
AD-RA-RRP-02	2U

Ring Run Panel
*9U Panel - Steel : 1.2t
*Nickel Plated



Part No.
AD-RA-CMP



Cable Management Panel
*Material : Steel 1.2t ,PVC

Part No.
AD-RA-OP



O-Panel
 *Material : Steel1.2t or ABS

Part No.
AD-RA-GB



Ground Bar
 *Material : Brass 4t
 *Nickel Plated.

Part No.
AD-RA-MHK



Mounting Hardware Kit
 *Rack Screws
 *Nickel Plated Wash
 *M5 Cage Nut

Part No.
AD-RA-EB



Eye Bolts
 *Material :
 Ss41 / M12

Part No.
AD-RA-C



Casters
 *2" Wide Track Single Wheel
 *Load Capacity : 1pc/125kg
 (275lbs) and 4pcs/500kg
 (1,100lbs)

Part No.
AD-RA-NTS



Nylon Tie Strap
 *Material : Nylon

Part No.
AD-RA-LF



Leveling Feet
 *A djustable
 *Load Capacity : 1pc/250kg
 (550lbs) and 4pcs/1,000kg
 (2,200lbs)

Part No.
AD-RA-FGF



Fan Grill & Filter
 *Material : ABS &
 Urethane Foam

Part No.	Size
AD-RA-200-HRC-06	6U
AD-RA-200-HRC-09	9U

19" Hub Rack
 *Material : Steel with Aluminum Mounting Rails.
 *5mm Tempered Glass Door



ADDISON NETWORKING CABLES..... YOUR RELIABLE PARTNER

ADDISON CABLES provide you comprehensive solutions for data, voice and video communications. With manufacturing facilities operating in different places in the world, Addison products are available on a global scale. This worldwide approach to manufacturing provides customers with fast delivery and lower cost.

In this catalogue, you could find the following **ADDISON** product:

Unshielded Twisted Pair (UTP)

Shielded Twisted Pair (FTP)

Fiber Optic Cable

Fibre and UTP Patch Cord

STANDARD COMPLIANCE

Today cable standards are varied in different countries and industry. By mastering these standard worldwide, we guarantee appropriate solutions for our customers in different applications.

QUALITY COMMITMENT

Our product quality is consistently high. Every drum of cable is carefully tested with stringent criteria. As a result, our cables not only meet, but exceed the industry standard most of the time. We have total quality commitment to follow strictly the emerging standard and ever-changing technologies in data communications.

INNOVATIVE PRODUCT

With our history of innovations, ADDISON offers one of the most complete lines of fibre and copper cabling solutions in the world. Our superior product performance and quality guarantee, backed by an extensive reseller network, provides better valued added services to our end users.

ENQUIRY

Whatever your application, Addison has the products and expertise to equip your network with the most appropriate cable. For the name of the authorized Distributor nearest you, please visit our web site www.addison-tech.com. All sales of Addison products are subject to Addison standard terms and conditions of sale.

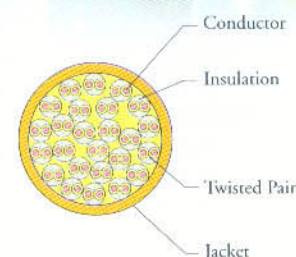
This catalogue shows a general description of Lan products and is not contractual in any case. Addison reserves the right to change specification without prior notice.

Category 3

Application	Horizontal Distribution & Backbone Cabling
Protocols supported	10Base-T
	100 Base-TX
	Token Ring 4Mbps
Tested Frequency	16M Hz

Applicable Standard

American	ANSI/EIA/TIA 568A
European	EN 50167 EN 50168 EN50169 EN50173
International	ISO/IEC 11801



25 prs UTP Cable

General Characteristics

	Unit	UTP	UTP Patch Cable	FTP	FTP Patch Cable
Impedance	Ohmn	100±15	100±15	100±15	100±15
Mutual Capacitance (Max)	(nF/100m)	6.6	6.6	6.6	6.6
Capacitance Unbalance (Max)	(pF/100m)	330	330	330	330
DC Resistance (Max)	(Ohmn/100m)	9.38	8.9	9.38	13.3
Resistance Unbalance (Max)	%	5	5	5	5
Velocity Ratio (Nom)		65	65	65	65

(Above values are valid for non plenum/FRPVC/LSZH type)

Construction Matrix

	Type	UTP	UTP Patch Cable	FTP	FTP Patch Cable
Conductor	Material	Solid Plain Copper	Stranded Plain Copper	Solid Plain Copper	Stranded Plain Copper
	Composition (No/mm)	1/0.5mm	7/0.2 mm	1/0.5mm	7/0.16 mm
	Gauge	24AWG	24AWG	24AWG	26AWG
Insulation	Material	Non-plenum: HDPE/PVC Plenum: FEP	Non-plenum: HDPE/PVC Plenum: FEP	Non-plenum: HDPE/PVC/Foam Skin Plenum: FEP	Non-plenum: HDPE/PVC/Foam Skin Plenum: FEP
	Diameter (mm)	0.92	0.96	0.83	0.96
Screen	Material	NIL	NIL	Overall Aluminium/ Polyester tape	Overall Aluminium/ Polyester tape
Drain Wire	Material	NIL	NIL	1 x 0.4 mm	7 x 0.16 mm
Construction	No. of pairs	4-600 prs	4/25 prs	4-400 prs	4/25 prs
Outer Sheath	Material	PVC/FRPVC/LSZH	PVC/FRPVC/LSZH	PVC/FRPVC/LSZH	PVC/FRPVC/LSZH

Performance Matrix

Frequency (MHz)	Attenuation (dB/100m)Max		Next (dB)Min		ACR (dB/100m)Min		Return Loss (dB)Min	
	UTP24#	FTP24#	UTP 24#	FTP 24#	UTP 24#	FTP24#	UTP 24#	FTP 24#
0.772	2.2	2.2	43	43	40.8	40.8	-	-
1	2.6	2.6	41	41	38.4	38.4	12	12
4	5.6	5.6	32	32	26.4	26.4	12	12
8	8.5	8.5	28	28	19.5	19.5	12	12
10	9.8	9.8	26	26	16.2	16.2	12	12
16	13.1	13.1	23	23	9.9	9.9	12	12

(Above values are valid for non plenum/FRPVC/LSZH type)

(All values are worst case. Tests were set up in accordance with TIA/EIA-568A. The values shown are typical and subject to change)

Category 3

Ordering Information

UTP Cable, CM/CMR/CMP/FRPVC/LSZH, 24AWG

FTP Cable, CM/CMR/CMP/FRPVC/LSZH, 24AWG

No. of Pair	Part No.	Description	No. of Pair	Part No.	Description
4	AD-CAT3UTP4PCM24	UTP Cat 3 4 Pairs, CM (Non-Plenum Grade)	4	AD-CAT3FTP4PCM24	FTP Cat 3 4 Pairs, CM (Non-Plenum Grade)
25	AD-CAT3UTP25PCM24	UTP Cat 3 25 Pairs, CM (Non-Plenum Grade)	25	AD-CAT3FTP25PCM24	FTP Cat 3 25 Pairs, CM (Non-Plenum Grade)
50	AD-CAT3UTP50PCM24	UTP Cat 3 50 Pairs, CM (Non-Plenum Grade)	50	AD-CAT3FTP50PCM24	FTP Cat 3 50 Pairs, CM (Non-Plenum Grade)
100	AD-CAT3UTP100PCM24	UTP Cat 3 100 Pairs, CM (Non-Plenum Grade)	100	AD-CAT3FTP100PCM24	FTP Cat 3 100 Pairs, CM (Non-Plenum Grade)
200	AD-CAT3UTP200PCM24	UTP Cat 3 200 Pairs, CM (Non-Plenum Grade)	200	AD-CAT3FTP200PCM24	FTP Cat 3 200 Pairs, CM (Non-Plenum Grade)
300	AD-CAT3UTP300PCM24	UTP Cat 3 300 Pairs, CM (Non-Plenum Grade)	300	AD-CAT3FTP300PCM24	FTP Cat 3 300 Pairs, CM (Non-Plenum Grade)
400	AD-CAT3UTP400PCM24	UTP Cat 3 400 Pairs, CM (Non-Plenum Grade)	400	AD-CAT3FTP400PCM24	FTP Cat 3 400 Pairs, CM (Non-Plenum Grade)
600	AD-CAT3UTP600PCM24	UTP Cat 3 600 Pairs, CM (Non-Plenum Grade)			
4	AD-CAT3UTP4PCMR24	UTP Cat 3 4 Pairs, CMR (Riser Grade)	4	AD-CAT3FTP4PCMR24	FTP Cat 3 4 Pairs, CMR (Riser Grade)
25	AD-CAT3UTP25PCMR24	UTP Cat 3 25 Pairs, CMR (Riser Grade)	25	AD-CAT3FTP25PCMR24	FTP Cat 3 25 Pairs, CMR (Riser Grade)
50	AD-CAT3UTP50PCMR24	UTP Cat 3 50 Pairs, CMR (Riser Grade)	50	AD-CAT3FTP50PCMR24	FTP Cat 3 50 Pairs, CMR (Riser Grade)
100	AD-CAT3UTP100PCMR24	UTP Cat 3 100 Pairs, CMR (Riser Grade)	100	AD-CAT3FTP100PCMR24	FTP Cat 3 100 Pairs, CMR (Riser Grade)
200	AD-CAT3UTP200PCMR24	UTP Cat 3 200 Pairs, CMR (Riser Grade)	200	AD-CAT3FTP200PCMR24	FTP Cat 3 200 Pairs, CMR (Riser Grade)
300	AD-CAT3UTP300PCMR24	UTP Cat 3 300 Pairs, CMR (Riser Grade)	300	AD-CAT3FTP300PCMR24	FTP Cat 3 300 Pairs, CMR (Riser Grade)
400	AD-CAT3UTP400PCMR24	UTP Cat 3 400 Pairs, CMR (Riser Grade)	400	AD-CAT3FTP400PCMR24	FTP Cat 3 400 Pairs, CMR (Riser Grade)
600	AD-CAT3UTP600PCMR24	UTP Cat 3 600 Pairs, CMR (Riser Grade)			
4	AD-CAT3UTP4PCMP24	UTP Cat 3 4 Pairs, CMP (Plenum Grade)	4	AD-CAT3FTP4PCMP24	FTP Cat 3 4 Pairs, CMP (Plenum Grade)
25	AD-CAT3UTP25PCMP24	UTP Cat 3 25 Pairs, CMP (Plenum Grade)	25	AD-CAT3FTP25PCMP24	FTP Cat 3 25 Pairs, CMP (Plenum Grade)
50	AD-CAT3UTP50PCMP24	UTP Cat 3 50 Pairs, CMP (Plenum Grade)	50	AD-CAT3FTP50PCMP24	FTP Cat 3 50 Pairs, CMP (Plenum Grade)
100	AD-CAT3UTP100PCMP24	UTP Cat 3 100 Pairs, CMP (Plenum Grade)	100	AD-CAT3FTP100PCMP24	FTP Cat 3 100 Pairs, CMP (Plenum Grade)
200	AD-CAT3UTP200PCMP24	UTP Cat 3 200 Pairs, CMP (Plenum Grade)	200	AD-CAT3FTP200PCMP24	FTP Cat 3 200 Pairs, CMP (Plenum Grade)
300	AD-CAT3UTP300PCMP24	UTP Cat 3 300 Pairs, CMP (Plenum Grade)	300	AD-CAT3FTP300PCMP24	FTP Cat 3 300 Pairs, CMP (Plenum Grade)
400	AD-CAT3UTP400PCMP24	UTP Cat 3 400 Pairs, CMP (Plenum Grade)	400	AD-CAT3FTP400PCMP24	FTP Cat 3 400 Pairs, CMP (Plenum Grade)
600	AD-CAT3UTP600PCMP24	UTP Cat 3 600 Pairs, CMP (Plenum Grade)			
4	AD-CAT3UTP4PFR24*	UTP Cat 3 4 Pairs, FRPVC	4	AD-CAT3FTP4PFR24*	FTP Cat 3 4 Pairs, FRPVC
25	AD-CAT3UTP25PFR24*	UTP Cat 3 25 Pairs, FRPVC	25	AD-CAT3FTP25PFR24*	FTP Cat 3 25 Pairs, FRPVC
50	AD-CAT3UTP50PFR24*	UTP Cat 3 50 Pairs, FRPVC	50	AD-CAT3FTP50PFR24*	FTP Cat 3 50 Pairs, FRPVC
100	AD-CAT3UTP100PFR24*	UTP Cat 3 100 Pairs, FRPVC	100	AD-CAT3FTP100PFR24*	FTP Cat 3 100 Pairs, FRPVC
200	AD-CAT3UTP200PFR24*	UTP Cat 3 200 Pairs, FRPVC	200	AD-CAT3FTP200PFR24*	FTP Cat 3 200 Pairs, FRPVC
300	AD-CAT3UTP300PFR24*	UTP Cat 3 300 Pairs, FRPVC	300	AD-CAT3FTP300PFR24*	FTP Cat 3 300 Pairs, FRPVC
400	AD-CAT3UTP400PFR24*	UTP Cat 3 400 Pairs, FRPVC	400	AD-CAT3FTP400PFR24*	FTP Cat 3 400 Pairs, FRPVC
600	AD-CAT3UTP600PFR24*	UTP Cat 3 600 Pairs, FRPVC			
4	AD-CAT3UTP4PLH24**	UTP Cat 3 4 Pairs, LSZH	4	AD-CAT3FTP4PLH24**	FTP Cat 3 4 Pairs, LSZH
25	AD-CAT3UTP25PLH24**	UTP Cat 3 25 Pairs, LSZH	25	AD-CAT3FTP25PLH24**	FTP Cat 3 25 Pairs, LSZH
50	AD-CAT3UTP50PLH24**	UTP Cat 3 50 Pairs, LSZH	50	AD-CAT3FTP50PLH24**	FTP Cat 3 50 Pairs, LSZH
100	AD-CAT3UTP100PLH24**	UTP Cat 3 100 Pairs, LSZH	100	AD-CAT3FTP100PLH24**	FTP Cat 3 100 Pairs, LSZH
200	AD-CAT3UTP200PLH24**	UTP Cat 3 200 Pairs, LSZH	200	AD-CAT3FTP200PLH24**	FTP Cat 3 200 Pairs, LSZH
300	AD-CAT3UTP300PLH24**	UTP Cat 3 300 Pairs, LSZH	300	AD-CAT3FTP300PLH24**	FTP Cat 3 300 Pairs, LSZH
400	AD-CAT3UTP400PLH24**	UTP Cat 3 400 Pairs, LSZH	400	AD-CAT3FTP400PLH24**	FTP Cat 3 400 Pairs, LSZH
600	AD-CAT3UTP600PLH24**	UTP Cat 3 600 Pairs, LSZH			

UTP Patch Cable, CM/CMR/CMP/FRPVC/LSZH, 24AWG

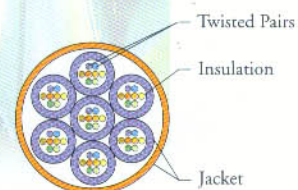
FTP Patch Cable, CM/CMR/CMP/FRPVC/LSZH, 26AWG

No. of Pair	Part No.	Description	No. of Pair	Part No.	Description
4	AD-CAT3UTP4PCM24A	UTP Cat 3 4 Pairs, CM (Non-Plenum Grade)	4	AD-CAT3FTP4PCM26A	FTP Cat 3 4 Pairs, CM (Non-Plenum Grade)
25	AD-CAT3UTP25PCM24A	UTP Cat 3 25 Pairs, CM (Non-Plenum Grade)	25	AD-CAT3FTP25PCM26A	FTP Cat 3 25 Pairs, CM (Non-Plenum Grade)
4	AD-CAT3UTP4PCMR24A	UTP Cat 3 4 Pairs, CMR (Riser Grade)	4	AD-CAT3FTP4PCMR26A	FTP Cat 3 4 Pairs, CMR (Riser Grade)
25	AD-CAT3UTP25PCMR24A	UTP Cat 3 25 Pairs, CMR (Riser Grade)	25	AD-CAT3FTP25PCMR26A	FTP Cat 3 25 Pairs, CMR (Riser Grade)
4	AD-CAT3UTP4PCMP24A	UTP Cat 3 4 Pairs, CMP (Plenum Grade)	4	AD-CAT3FTP4PCMP26A	FTP Cat 3 4 Pairs, CMP (Plenum Grade)
25	AD-CAT3UTP25PCMP24A	UTP Cat 3 25 Pairs, CMP (Plenum Grade)	25	AD-CAT3FTP25PCMP26A	FTP Cat 3 25 Pairs, CMP (Plenum Grade)
4	AD-CAT3UTP4PFR24A*	UTP Cat 3 4 Pairs, FRPVC	4	AD-CAT3FTP4PFR26A*	FTP Cat 3 4 Pairs, FRPVC
25	AD-CAT3UTP25PFR24A*	UTP Cat 3 25 Pairs, FRPVC	25	AD-CAT3FTP25PFR26A*	FTP Cat 3 25 Pairs, FRPVC
4	AD-CAT3UTP4PLH24A**	UTP Cat 3 4 Pairs, LSZH	4	AD-CAT3FTP4PLH26A**	FTP Cat 3 4 Pairs, LSZH
25	AD-CAT3UTP25PLH24A**	UTP Cat 3 25 Pairs, LSZH	25	AD-CAT3FTP25PLH26A**	FTP Cat 3 25 Pairs, LSZH

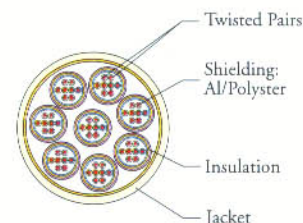
* FRPVC material may comply with IEC332-1, IEC332-3A/B/C. When ordering FRPVC grade, Fire retardancy standard has to be specified. Please refer to page 21-22 for more detailed information.

** LSZH material may comply with IEC332-1, IEC332-3A/B/C. When ordering LSZH grade, Smoke Density, Acid Gas Emission, Corrosive Gas Emission, Toxicity Index, Oxygen Index and Flammability Temperature Index together with fire retardancy standard have to be specified. Please refer to page 21-22 for more detailed information.

Category 5



nx4 prs Multiways UTP Cable



nx4 prs Multiways FTP Cable

Application	Connection between user outlet and patch frame
Protocols supported	10BaseT
	100 Base-TX, 100 Base-VG
	FDDI/CDDI 100Mbps
	Token Ring 16Mbps
	ATM 155Mbps
Tested Frequency	Tested up to 100 MHz
Highlights	Improved PS-NEXT AND ACR
	Supports all current and proposed Class D Link as proposed in ISO/IEC 11801

Applicable Standard

American	ANSI/EIA/TIA 568A
European	EN 50167 EN 50168 EN50169 EN50173
International	ISO/IEC 11801

General Characteristics

		UTP	UTP Patch Cable	FTP	FTP Patch Cable
Impedance	Ohmn	100±15	100±15	100±15	100±15
Mutual Capacitance (Max)	(nF/100m)	5.5	5.5	5.5	5.5
Capacitance Unbalance (Max)	(pF/100m)	330	330	330	330
DC Resistance (Max)	(Ohmn/100m)	9.38	8.9	5.91	13.3
Resistance Unbalance (Max)	%	5	5	5	5
Velocity Ratio(Nom)		65	65	65	65

(Above values are valid for non plenum/FRPVC/LSZH type)

Construction Matrix

	Type	UTP	UTP Patch Cable	FTP	FTP Patch Cable
Conductor	Material	Solid Plain Copper	Stranded Plain Copper	Solid Plain Copper	Stranded Plain Copper
	Composition (No/mm)	1/0.5 mm	7/0.2 mm	1/0.5 mm	7/0.16 mm
	Gauge	24AWG	24AWG	24AWG	26AWG
Insulation	Material	Non-plenum: Polyethylene/Polyolefin, Plenum: FEP	Non-plenum: Polyethylene/Polyolefin, Plenum: FEP	Non-plenum: Polyethylene/Polyolefin, Plenum: FEP	Non-plenum: Polyethylene/Polyolefin, Plenum: FEP
	Diameter (mm)	0.96	0.96	1.02	0.96
Screen	Material	NIL	NIL	Overall Aluminium/ Polyester Tape	Overall Aluminium/ Polyester Tape
Drain Wire	Material	NIL	NIL	1 x 0.4 mm	7 x 0.16 mm
Construction	No of pairs	4/25/n x 4/50/100 prs	4/25 prs	4/25/n x 4 prs	4/25 prs
Outer Sheath	Material	PVC/FRPVC/LSZH	PVC/FRPVC/LSZH	PVC/FRPVC/LSZH	PVC/FRPVC/LSZH
Outer Diameter	Diameter (mm)	5.4±0.2 (4 pairs)	5.25±0.2 (4 pairs)	5.8±0.2 (4 pairs)	5.7±0.2 (4 pairs)

Category 5

Performance Matrix

Frequency	Attenuation(dB/100m) Max		NEXT (dB) Min		PSNEXT (dB) Min		ACR (dB/100m) Min		PSACR (dB/100m) Min		Return Loss (dB) Min	
	UTP 24#	FTP 24#	UTP 24#	FTP 24#	UTP 24#	FTP 24#	UTP 24#	FTP 24#	UTP 24#	FTP 24#	UTP 24#	FTP 24#
1	2	2	62	62	60	60	60	60	58	58	23	23
4	4.1	4.1	53	53	51	51	48.9	48.9	46.9	46.9	23	23
8	5.8	5.8	48.5	48.5	46.5	46.5	42.7	42.7	40.7	40.7	23	23
10	6.5	6.5	47	47	45	45	40.5	40.5	38.5	38.5	23	23
16	8.2	8.2	44	44	41.9	41.9	35.8	35.8	33.7	33.7	23	23
20	9.3	9.3	42.5	42.5	40.5	40.5	33.2	33.2	31.2	31.2	23	23
25	10.3	10.3	41.5	41.5	39.5	39.5	31.2	31.2	29.2	29.2	23	23
31.25	11.7	11.7	39.6	39.6	37.6	37.6	27.9	27.9	25.9	25.9	23	23
62.5	17	17	35.1	35.1	33.1	33.1	18.1	18.1	16.1	16.1	23	23
100	22	22	32	32	30	30	10	10	8	8	23	23
200	32.2	32.2	27	27	25	25	-	-	-	-	23	23

(Above values are valid for non plenum/FRPVC/LSZH type)

(All values are worst case. Tests were set up in accordance with TIA/EIA-568A. The values shown are typical and subject to change)

Ordering Information

UTP Cable, CM/CMR/CMP/FRPVC/LSZH, 24AWG

No. of Pair	Part No.	Description
4	AD-CAT5UTP4PCM24	UTP Cat 5 4 Pairs, CM (Non-Plenum Grade)
25	AD-CAT5UTP25PCM24	UTP Cat 5 25 Pairs, CM (Non-Plenum Grade)
4	AD-CAT5UTP4PCMR24	UTP Cat 5 4 Pairs, CMR (Riser Grade)
25	AD-CAT5UTP25PCMR24	UTP Cat 5 25 Pairs, CMR (Riser Grade)
4	AD-CAT5UTP4PCMP24	UTP Cat 5 4 Pairs, CMP (Plenum Grade)
25	AD-CAT5UTP25PCMP24	UTP Cat 5 25 Pairs, CMP (Plenum Grade)
4	AD-CAT5UTP4PFR24*	UTP Cat 5 4 Pairs, FRPVC
25	AD-CAT5UTP25PFR24*	UTP Cat 5 25 Pairs, FRPVC
4	AD-CAT5UTP4PLH24**	UTP Cat 5 4 Pairs, LSZH
25	AD-CAT5UTP25PLH24**	UTP Cat 5 25 Pairs, LSZH

FTP Cable, CM/CMR/CMP/FRPVC/LSZH, 24AWG

No. of Pair	Part No.	Description
4	AD-CAT5FTP4PCM24	FTP Cat 5 4 Pairs, CM (Non-Plenum Grade)
25	AD-CAT5FTP25PCM24	FTP Cat 5 25 Pairs, CM (Non-Plenum Grade)
4	AD-CAT5FTP4PCMR24	FTP Cat 5 4 Pairs, CMR (Riser Grade)
25	AD-CAT5FTP25PCMR24	FTP Cat 5 25 Pairs, CMR (Riser Grade)
4	AD-CAT5FTP4PCMP24	FTP Cat 5 4 Pairs, CMP (Plenum Grade)
25	AD-CAT5FTP25PCMP24	FTP Cat 5 25 Pairs, CMP (Plenum Grade)
4	AD-CAT5FTP4PFR24*	FTP Cat 5 4 Pairs, FRPVC
25	AD-CAT5FTP25PFR24*	FTP Cat 5 25 Pairs, FRPVC
4	AD-CAT5FTP4PLH24**	FTP Cat 5 4 Pairs, LSZH
25	AD-CAT5FTP25PLH24**	FTP Cat 5 25 Pairs, LSZH

UTP Patch Cable , CM/CMR/CMP/FRPVC/LSZH, 24AWG

No. of Pair	Part No.	Description
4	AD-CAT5UTP4PCM24A	UTP Cat 5 4 Pairs, CM (Non-Plenum Grade)
25	AD-CAT5UTP25PCM24A	UTP Cat 5 25 Pairs, CM (Non-Plenum Grade)
4	AD-CAT5UTP4PCMR24A	UTP Cat 5 4 Pairs, CMR (Riser Grade)
25	AD-CAT5UTP25PCMR24A	UTP Cat 5 25 Pairs, CMR (Riser Grade)
4	AD-CAT5UTP4PCMP24A	UTP Cat 5 4 Pairs, CMP (Plenum Grade)
25	AD-CAT5UTP25PCMP24A	UTP Cat 5 25 Pairs, CMP (Plenum Grade)
4	AD-CAT5UTP4PFR24A*	UTP Cat 5 4 Pairs, FRPVC
25	AD-CAT5UTP25PFR24A*	UTP Cat 5 25 Pairs, FRPVC
4	AD-CAT5UTP4PLH24A**	UTP Cat 5 4 Pairs, LSZH
25	AD-CAT5UTP25PLH24A**	UTP Cat 5 25 Pairs, LSZH

FTP Patch Cable , CM/CMR/CMP/FRPVC/LSZH, 26AWG

No. of Pair	Part No.	Description
4	AD-CAT5FTP4PCM26A	FTP Cat 5 4 Pairs, CM (Non-Plenum Grade)
25	AD-CAT5FTP25PCM26A	FTP Cat 5 25 Pairs, CM (Non-Plenum Grade)
4	AD-CAT5FTP4PCMR26A	FTP Cat 5 4 Pairs, CMR (Riser Grade)
25	AD-CAT5FTP25PCMR26A	FTP Cat 5 25 Pairs, CMR (Riser Grade)
4	AD-CAT5FTP4PCMP26A	FTP Cat 5 4 Pairs, CMP (Plenum Grade)
25	AD-CAT5FTP25PCMP26A	FTP Cat 5 25 Pairs, CMP (Plenum Grade)
4	AD-CAT5FTP4PFR26A*	FTP Cat 5 4 Pairs, FRPVC
25	AD-CAT5FTP25PFR26A*	FTP Cat 5 25 Pairs, FRPVC
4	AD-CAT5FTP4PLH26A**	FTP Cat 5 4 Pairs, LSZH
25	AD-CAT5FTP25PLH26A**	FTP Cat 5 25 Pairs, LSZH

* FRPVC material may comply with IEC332-1, IEC332-3A/B/C. When ordering FRPVC grade, Fire retardancy standard has to be specified. Please refer to page 21-22 for more detailed information.

** LSZH material may comply with IEC332-1, IEC332-3A/B/C. When ordering LSZH grade, Smoke Density, Acid Gas Emission, Corrosive Gas Emission, Toxicity Index, Oxygen Index and Flammability Temperature Index together with fire retardancy standard have to be specified. Please refer to page 21-22 for more detailed information.

Remarks : Large pair counts (multi-4 pair, individually jacketed construction, 50 prs and 100 prs) are available upon request. Please consult our local sales office for product specification.

Category 5 Enhanced

Application	Horizontal cabling (155 MHz)
Protocols supported	10Base-T
	100 Base-TX, 100 Base-VG
	FDDI/CDDI 100Mbps
	Token Ring 16Mbps
	ATM 155Mbps
Tested Frequency	Tested up to 200 MHz
Highlights	Improved PS-NEXT AND ACR
	Better EMC (Electro Magnetic Compatibility) than standard Category 5 UTP cables due to their high level of balance and SRL
	8 dB power sum performance over Cat 5

Applicable Standard

American	ANSI/EIA/TIA 568A
European	EN 50167 EN 50168 EN50169 EN50173
International	ISO/IEC 11801

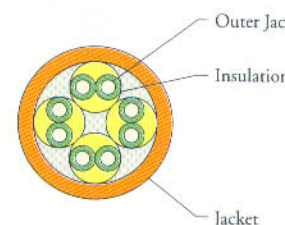
General Characteristics

	Unit	UTP	UTP Patch Cable	FTP	FTP Patch Cable
Impedance	Ohm	100±15	100±15	100±15	100±15
Mutual Capacitance (Max)	(nF/100m)	5.5	5.5	5.5	5.5
Capacitance Unbalance (Max)	(pF/100m)	330	330	330	330
DC Resistance (Max)	(Ohm/100m)	9.38	8.9	5.91	13.3
Resistance Unbalance (Max)	%	5	5	5	5
Velocity ratio (Nom)	(%)	65	65	65	65

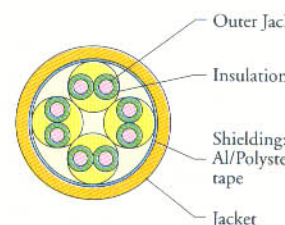
(Above values are valid for non plenum/FRPVC/LSZH type)

Construction Matrix

	Type	UTP	UTP Patch Cable	FTP	FTP Patch Cable
Conductor	Material	Solid Plain Copper	Stranded Plain Copper	Solid Plain Copper	Stranded Plain Copper
	Composition (No/mm)	1/0.5 mm	7/0.2 mm	1/0.5 mm	7/0.16 mm
	Gauge	24AWG	24AWG	24AWG	26AWG
Insulation	Material	Non-plenum: Polyethylene/Polyolefin, Plenum: FEP	Non-plenum: Polyethylene/Polyolefin, Plenum: FEP	Non-plenum: Polyethylene/Polyolefin, Plenum: FEP	Non-plenum: Polyethylene/Polyolefin, Plenum: FEP
	Diameter (mm)	0.96	0.96	1.02	0.96
Screen	Material	NIL	NIL	Overall Aluminium/ Polyester Tape	Overall Aluminium/ Polyester Tape
Drain Wire	Material	NIL	NIL	1 x 0.4 mm	7 x 0.16 mm
Construction	No of pairs	4/25/n x 4 prs	4/25 prs	4/25/n x 4 prs	4/25 prs
Outer Sheath	Material	PVC/FRPVC/LSZH	PVC/FRPVC/LSZH	PVC/FRPVC/LSZH	PVC/FRPVC/LSZH
Outer Diameter	Diameter (mm)	5.4±0.2 (4 pairs)	5.25±0.2 (4 pairs)	5.8±0.2 (4 pairs)	5.7±0.2 (4 pairs)



UTP Cable



FTP Cable

Category 5 Enhanced

Performance Matrix

Frequency (MHz)	Attenuation (dB/100m)Max		NEXT (dB)Min		PSNEXT (dB)Min		ACR (dB/100m)Min		PS ACR (dB/100m)Min		Return Loss (dB)Min		FEXT (dB)Min		ELFEXT (dB/100m)Min		PSELFEXT (dB/100m)Min	
	UTP24#	FTP24#	UTP24#	FTP24#	UTP24#	FTP24#	UTP24#	FTP24#	UTP24#	FTP24#	UTP24#	FTP24#	UTP24#	FTP24#	UTP24#	FTP24#	UTP24#	FTP24#
1	2	2	67	67	65	65	65	65	63	63	23	23	64	64	62	62	59	59
4	4	4	58	58	56	56	54	54	52	52	23	23	54	54	50	50	47	47
8	5.7	5.7	53.5	53.5	51.5	51.5	47.7	47.7	45.7	45.7	23	23	49.7	49.7	43.9	43.9	40.9	40.9
10	6.4	6.4	52	52	50	50	45.6	45.6	43.6	43.6	23	23	48.4	48.4	42	42	39	39
16	8.2	8.2	48.9	48.9	46.9	46.9	40.8	40.8	38.8	38.8	23	23	46.1	46.1	37.9	37.9	34.9	34.9
20	9.2	9.2	47.5	47.5	45.5	45.5	38.3	38.3	36.3	36.3	23	23	45.2	45.2	36	36	33	33
25	10.3	10.3	46	46	44	44	35.7	35.7	33.7	33.7	23	23	44.5	44.5	34.5	34.5	31	31
31.25	11.6	11.6	44.6	44.6	42.6	42.6	32.9	32.9	30.9	30.9	23	23	43.7	43.7	32.1	32.1	29.1	29.1
62.5	16.9	16.9	40.1	40.1	38.1	38.1	23.2	23.2	21.2	21.2	23	23	42.9	42.9	26.1	26.1	23.1	23.1
100	21.8	21.8	37	37	35	35	15.2	15.2	13.2	13.2	23	23	43.8	43.8	22	22	19	19
155	27.8	27.8	34.1	34.1	32.1	32.1	6.3	6.3	4.3	4.3	21.1	21.1	46	46	18.2	18.2	15.2	15.2
175	29.8	29.8	33.4	33.4	31.4	31.4	3.5	3.5	1.5	1.5	20.6	20.6	-	-	-	-	14.1	14.1
200	32.2	32.2	32.5	32.5	30.5	30.5	0.3	0.3	-1.7	-1.7	20	20	-	-	-	-	13	13
230	34.9	34.9	31.6	31.6	29.6	29.6	-3.3	-3.3	-5.3	-5.3	19.4	19.4	-	-	-	-	11.8	11.8
250	36.6	36.6	31	31	29	29	-5.6	-5.6	-7.6	-7.6	19	19	-	-	-	-	11	11
300	40.7	40.7	29.8	29.8	27.8	27.8	-10.8	-10.8	-12.9	-12.9	18.2	18.2	-	-	-	-	9.5	9.5
350	44.5	44.5	28.8	28.8	26.8	26.8	-15.7	-15.7	-17.7	-17.7	17.6	17.6	-	-	-	-	8.1	8.1

(Above values are valid for non plenum/FRPVC/LSZH type)

(All values are worst case. Tests were set up in accordance with TIA/EIA-568A. The values shown are typical and subject to change)

Ordering Information

UTP Cable, CM/CMR/CMP/FRPVC/LSZH, 24AWG

No. of Pair	Part No.	Description
4	AD-CAT5EUTP4PCM24	UTP Cat 5E 4 Pairs, CM (Non-Plenum Grade)
4	AD-CAT5EUTP4PCMR24	UTP Cat 5E 4 Pairs, CMR (Riser Grade)
4	AD-CAT5EUTP4PCMP24	UTP Cat 5E 4 Pairs, CMP (Plenum Grade)
4	AD-CAT5EUTP4PFR24*	UTP Cat 5E 4 Pairs, FRPVC
4	AD-CAT5EUTP4PLH24**	UTP Cat 5E 4 Pairs, LSZH

UTP Patch Cable, CM/CMR/CMP/FRPVC/LSZH, 26AWG

No. of Pair	Part No.	Description
4	AD-CAT5EUTP4PCM26A	UTP Cat 5E 4 Pairs, CM (Non-Plenum Grade)
4	AD-CAT5EUTP4PCMR26A	UTP Cat 5E 4 Pairs, CMR (Riser Grade)
4	AD-CAT5EUTP4PCMP26A	UTP Cat 5E 4 Pairs, CMP (Plenum Grade)
4	AD-CAT5EUTP4PFR26A*	UTP Cat 5E 4 Pairs, FRPVC
4	AD-CAT5EUTP4PLH26A**	UTP Cat 5E 4 Pairs, LSZH

FTP Cable, CM/CMR/CMP/FRPVC/LSZH, 24AWG

No. of Pair	Part No.	Description
4	AD-CAT5EFTP4PCM24	FTP Cat 5E 4 Pairs, CM (Non-Plenum Grade)
4	AD-CAT5EFTP4PCMR24	FTP Cat 5E 4 Pairs, CMR (Riser Grade)
4	AD-CAT5EFTP4PCMP24	FTP Cat 5E 4 Pairs, CMP (Plenum Grade)
4	AD-CAT5EFTP4PFR24*	FTP Cat 5E 4 Pairs, FRPVC
4	AD-CAT5EFTP4PLH24**	FTP Cat 5E 4 Pairs, LSZH

FTP Patch Cable, CM/CMR/CMP/FRPVC/LSZH, 26AWG

No. of Pair	Part No.	Description
4	AD-CAT5EFTP4PCM26A	FTP Cat 5E 4 Pairs, CM (Non-Plenum Grade)
4	AD-CAT5EFTP4PCMR26A	FTP Cat 5E 4 Pairs, CMR (Riser Grade)
4	AD-CAT5EFTP4PCMP26A	FTP Cat 5E 4 Pairs, CMP (Plenum Grade)
4	AD-CAT5EFTP4PFR26A*	FTP Cat 5E 4 Pairs, FRPVC
4	AD-CAT5EFTP4PLH26A**	FTP Cat 5E 4 Pairs, LSZH

* FRPVC material may comply with IEC332-1, IEC332-3A/B/C. When ordering FRPVC grade, Fire retardancy standard has to be specified. Please refer to page 21-22 for more detailed information.

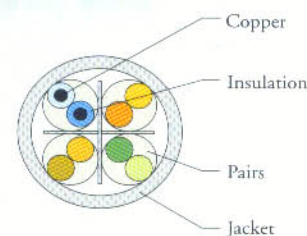
** LSZH material may comply with IEC332-1, IEC332-3A/B/C. When ordering LSZH grade, Smoke Density, Acid Gas Emission, Corrosive Gas Emission, Toxicity Index, Oxygen Index and Flammability Temperature Index together with fire retardancy standard have to be specified. Please refer to page 21-22 for more detailed information.

Remarks : Large pair counts (multi- 4 pair, individually jacketed construction. 25 & 100 prs) are available upon request. Please consult our local sales office for product specification.



Category 6

Application	Ethernet Application
Protocols supported	10Base-T
	100 Base-TX, 100 Base-VG
	FDDI/CDDI 100Mbps
	Token Ring
	ATM 155Mbps
	1000Base-T
Tested Frequency	Tested up to 350 MHz
Highlights	EL-PSFEXT AND PSACR results exceed by far the minimum proposed Cat 6 limits
	Delay Skew, LCL/LCTL and Coupling Attenuation in full compliance with proposed Cat 6 standard
Applicable Standard	ISO/IEC JTC1/SC25/WG3 Category 6 Proposal
	TIA/EIA568A Category 6 Draft

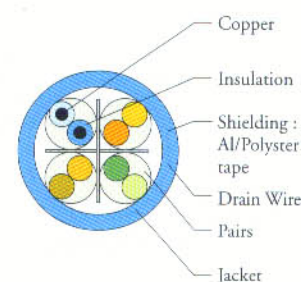


UTP Cable

General Characteristics

Impedance	100 ohm $\pm 15\%$ @ 1-100 Mhz				
Mutual Capacitance (Max)	42 pF/m nom @ 1 KHz				
Capacitance Unbalance	1000pF/km @ 1 KHz wire to ground				
DC Resistance 23/24# (Max)	93.8 ohm/km Max				
Resistance Unbalance (Max)	5%				
Velocity ratio (Nom)	UTP	FTP	STP	UTP Patch	FTP Patch
	66%	78%	80%	66%	66%
Coupling Attenuation (Min)	As per individual technical specification				
LCL (Min)	48 - 10 log (f) @ 1-300 MHz				
Propagation Delay	534 + 36 (f) ¹ / ₂ max @ 1-300 MHz				
Propagation Delay Skew	45n S/100m max @ 1-300 MHz				
Insulation Resistance	152 MOhm Km min @ 500Vdc 20C				

(Above values are valid for non plenum/FRPVC/LSZH type)



FTP Cable

Construction Matrix

	Type	UTP	UTP Patch Cable	FTP	FTP Patch Cable	STP
		4 prs 23/24#	4 prs 24#	4 prs 23/24#	4 prs 26#	4 prs 23/24#
Conductor	Material	Solid Plain Copper	Stranded Plain Copper	Solid Plain Copper	Stranded Plain Copper	Solid Plain Copper
	Composition (No/mm)	1/0.55 mm / 1/0.5mm	7/0.2mm	1/0.55 mm / 1/0.5mm	7/0.16 mm	1/0.55mm / 1/0.5mm
	Gauge	23 AWG / 24AWG	24AWG	23AWG / 24AWG	26AWG	23AWG/ 24AWG
Insulation	Material	Non-plenum: PE	Non-plenum: PE	Non-plenum: PE	Non-plenum: PE	Non-plenum: PE
	Plenum: FEP	Plenum: FEP	Plenum: FEP	Plenum: FEP	Plenum: FEP	Plenum: FEP
	Diameter (mm)	1.0	0.96	1.02	0.96	1.04
Screen	Material	NIL	NIL	Overall Al screened	Overall Al screened	Individually Al Screened
Drain Wire	Material	NIL	NIL	1 x 0.4mm	7 x 0.16mm	1 x 0.4 mm
Construction	No of pairs	4 prs	4 prs	4 prs	4 prs	4 prs
Outer Sheath	Material	PVC/FRPVC/LSZH	PVC/FRPVC/LSZH	PVC/FRPVC/LSZH	PVC/FRPVC/LSZH	PVC/FRPVC/LSZH
Outer Diameter	Diameter (mm)	6.5 \pm 0.2	5.5 \pm 0.2	6.0 \pm 0.2	5.8 \pm 0.2	6.7 \pm 0.2

Category 7

Performance Matrix

Frequency (MHz)	Attenuation (dB/100m)Max		NEXT (dB) Min		PSNEXT (dB) Min		ACR (dB/100m)Min		PSACR (dB/100m) Min		Return Loss (dB) Min	
	SSTP 23#	SSTP 22#	SSTP 23#	SSTP 22#	SSTP 23#	SSTP 22#	SSTP 23#	SSTP 22#	SSTP 23#	SSTP 22#	SSTP 23#	SSTP 22#
1	1.9	1.8	90	90	88	88	88.1	88.2	86.1	86.2	22	22
4	3.6	3.5	90	90	88	88	86.4	86.5	84.4	84.5	22	22
10	5.8	5.6	90	90	88	88	84.2	84.4	82.2	82.4	22	22
16	7.4	6.7	90	90	88	88	82.6	83.3	80.6	81.3	22	22
20	8.3	7.5	90	90	88	88	81.7	82.5	79.7	80.5	22	22
31.25	10.4	10	90	90	88	88	79.6	80	77.6	78	20.6	20.6
62.5	14.6	14	90	90	88	88	75.4	76	73.4	74	18.5	18.5
100	18.4	17.5	90	90	88	88	71.6	72.5	69.6	70.5	17.1	17.1
155	20.5	19.5	90	90	88	88	68.5	69.5	66.5	67.5	15.8	15.8
175	24.3	23	90	90	88	88	65.7	67	63.7	65	15.4	15.4
200	26.2	25	90	90	88	88	63.8	65	61.8	63	15	15
300	32.1	31	90	90	88	88	57.9	59	55.9	57	13.8	13.8
350	35	34	80	80	78	78	45	46	43	44	13	13
600	49	48	80	80	78	78	31	32	29	30	11.7	11.7
900	62	58	70	70	68	68	8	12	6	10	9.2	9.2

(Above values are valid for non plenum /FRPVC/LSZH type)

(All values are worst case. Tests were set up in accordance with TIA/EIA-568A. The values shown are typical and subject to change)

Ordering Information

Category 7

SSTP Cable, CM/CMR/CMP/FRPVC/LSZH, 23AWG

No. of Pair	Part No.	Description
4	AD-CAT7SSTP4PCM23	SSTP Cat 7 4 Pairs, CM (Non-Plenum Grade)
4	AD-CAT7SSTP4PCMR23	SSTP Cat 7 4 Pairs, CMR (Riser Grade)
4	AD-CAT7SSTP4PCMP23	SSTP Cat 7 4 Pairs, CMP (Plenum Grade)
4	AD-CAT7SSTP4PFR23*	SSTP Cat 7 4 Pairs, FRPVC
4	AD-CAT7SSTP4PLH23**	SSTP Cat 7 4 Pairs, LSZH

SSTP Cable, CM/CMR/CMP/FRPVC/LSZH, 22AWG

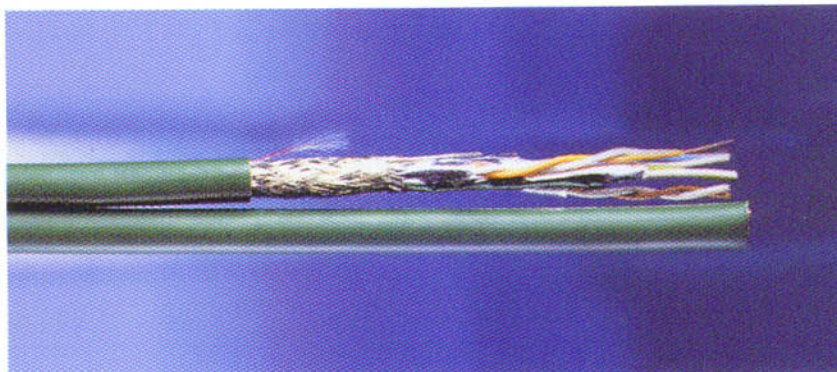
No. of Pair	Part No.	Description
4	AD-CAT7SSTP4PCM22	SSTP Cat 7 4 Pairs, CM (Non-Plenum Grade)
4	AD-CAT7SSTP4PCMR22	SSTP Cat 7 4 Pairs, CMR (Riser Grade)
4	AD-CAT7SSTP4PCMP22	SSTP Cat 7 4 Pairs, CMP (Plenum Grade)
4	AD-CAT7SSTP4PFR22*	SSTP Cat 7 4 Pairs, FRPVC
4	AD-CAT7SSTP4PLH22**	SSTP Cat 7 4 Pairs, LSZH

SSTP Patch Cable, CM/CMR/CMP/FRPVC/LSZH, 26AWG

No. of Pair	Part No.	Description
4	AD-CAT7SSTP4PCM26A	SSTP Cat 7 4 Pairs, 26AWG, CM (Non-Plenum Grade)
4	AD-CAT7SSTP4PCMR26A	SSTP Cat 7 4 Pairs, 26AWG, CMR (Riser Grade)
4	AD-CAT7SSTP4PCMP26A	SSTP Cat 7 4 Pairs, 26AWG, CMP (Plenum Grade)
4	AD-CAT7SSTP4PFR26A**	SSTP Cat 7 4 Pairs, 26AWG, FRPVC
4	AD-CAT7SSTP4PLH26A***	SSTP Cat 7 4 Pairs, 26AWG, LSZH

* FRPVC material may comply with IEC332-1, IEC332-3A/B/C. When ordering FRPVC grade, Fire retardancy standard has to be specified. Please refer to page 21-22 for more detailed information.

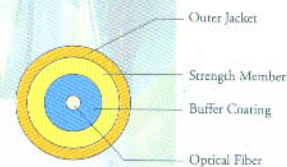
** LSZH material may comply with IEC332-1, IEC332-3A/B/C. When ordering LSZH grade, Smoke Density, Acid Gas Emission, Corrosive Gas Emission, Toxicity Index, Oxygen Index and Flammability Temperature Index together with fire retardancy standard have to be specified. Please refer to page 21-22 for more detailed information.



Fiber Optic Cables

Tight Buffer Simplex Cables

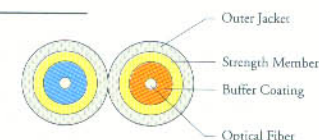
Applications For general purpose indoor application
Interconnection cables for jumpers, patch cords or pigtails



P/N	Cable Family	Cable Construction
AD-S100A03FT001TB	Simplex 21	1 Optical Fiber (SM or MM), Aramid Strength Yarns, 2.1 mm Fire Retardant PVC Sheath, Tight Buffer Construction.
AD-S100A05FT001TB	Simplex 21	1 Optical Fiber (SM or MM), Aramid Strength Yarns, 2.1 mm HFFR Sheath, Tight Buffer Construction.
AD-S200A03FT001TB	Simplex 28	1 Optical Fiber (SM or MM), Aramid Strength Yarns, 2.8 mm Fire Retardant PVC Sheath, Tight Buffer Construction.
AD-S200A05FT001TB	Simplex 28	1 Optical Fiber (SM or MM), Aramid Strength Yarns, 2.8 mm HFFR Sheath, Tight Buffer Construction.

Tight Buffer Duplex Zip Cables

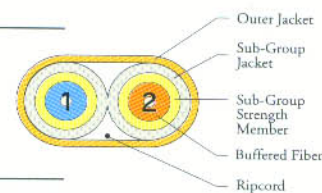
Application For general purpose indoor application
Interconnection cables for jumpers, patch cords or pigtails



P/N	Cable Family	Cable Construction
AD-D100A03FT002TB	Duplex Zip	2 Optical Fibers (SM or MM), Aramid Strength Yarns, "Figure 8" Fire Retardant PVC Sheath. Tight Buffer Construction.
AD-D100A05FT002TB	Duplex Zip	2 Optical Fibers (SM or MM), Aramid Strength Yarns, "Figure 8" HFFR Sheath, Tight Buffer Construction.

Tight Buffer Duplex Flat Cables

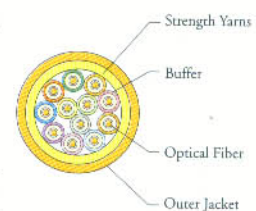
Application For general purpose indoor application
Interconnection cables for jumpers, patch cords or pigtails



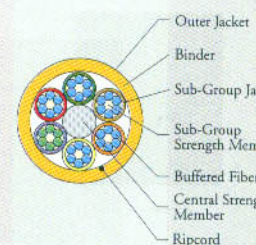
P/N	Cable Family	Cable Construction
AD-D202A03FT002TB	Duplex Flat	2 2.8 mm Minicables, overall Fire Retardant PVC Sheath, Tight Buffer Construction
AD-D202A05FT002TB	Duplex Flat	2 2.8 mm Minicables, overall HFFR Sheath, Tight Buffer Construction

Tight Buffer Distribution Cables

Application For general purpose, riser, plenum indoor application, (short and medium distance)
Interconnection of distribution boxes, distribution boxes and customer equipments between floors



P/N	Cable Family	Cable Construction
AD-MT02A03FTFNTB	Tight Buffer Distribution	2-12 Optical Fibers, Aramid Strength Yarns, Rip Cord, Fire Retardant PVC Jacket, Tight Buffer Construction.
AD-MT02A05FTFNTB	Tight Buffer Distribution	2-12 Optical Fibers, Aramid Strength Yarns, Rip Cord, HFFR Jacket, Tight Buffer Construction.
AD-MT32A03FTFNSTB	Tight Buffer (semi) Distribution	16-72 Optical Fibers organized in color coded sub-groups, Rigid Dielectric CSM, Aramid Strength Yarns, Rip Cord, Fire Retardant PVC Jacket, Semi Tight Buffer Construction.
AD-MT32A05FTFNSTB	Tight Buffer (semi) Distribution	16-72 Optical Fibers organized in color coded sub-groups, Rigid Dielectric CSM, Aramid Strength Yarns, Rip Cord, HFFR Jacket, Semi Tight Buffer Construction.

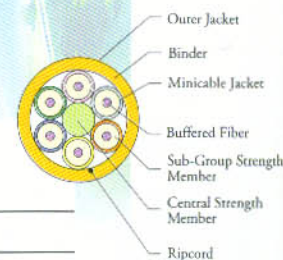


Fiber Optic Cables

Tight Buffer Breakout Cables

Application For general purpose, riser and plenum indoor application (short distance)
For routing to different locations and direct termination of fibers in the field

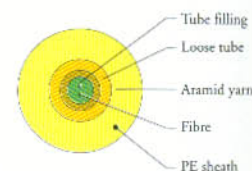
P/N	Cable Family	Cable Construction
AD-BT02A03FTFNTB	Tight Buffer Breakout	2-4 2.1 mm Minicables, Rip Cord, no Central Strength Member, Aramid Strength Yarns, Fire Retardant, PVC Jacket, Tight Buffer Construction.
AD-BT02A05FTFNTB	Tight Buffer Breakout	2-4 2.1 mm Minicables, Rip Cord, no Central Strength Member, Aramid Strength Yarns, HFFR Jacket, Tight Buffer Construction.
AD-BT32A03FTFNSTB	Tight Buffer (semi) Breakout	4-18 stranded 2.1 mm Minicables, Rigid Dielectric CSM, Rip Cord, Aramid Strength Yarns, Fire Retardant, PVC Jacket, Semi Tight Buffer Construction.
AD-BT32A05FTFNSTB	Tight Buffer (semi) Breakout	4-18 stranded 2.1 mm Minicables, Rigid Dielectric CSM, Rip Cord, Aramid Strength Yarns, HFFR Jacket, Semi Tight Buffer Construction.



Central Loose Tube Cables

Application For both indoor and outdoor application
For ducts, aerial installations and direct burial (armoured option)
For distribution and general purpose cables

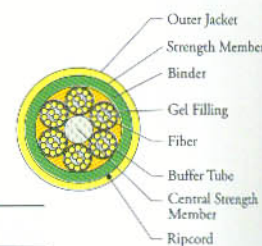
P/N	Cable Family	Cable Construction
AD-CL00A03FTFNWB1	Central Loose Tube	1-12 Optical Fibers in a gel-filled Central Loose Tube, Aramid Strength Yarns, Fire Retardant PVC Sheath, Moderate Water Blocking Construction
AD-CL00A01FTFNWB2	Central Loose Tube	1-12 Optical Fibers in a gel-filled Central Loose Tube, Aramid Strength Yarns, Gel in Cable Core Interstices, PE Sheath
AD-CL00A05FTFNWB3	Central Loose Tube	1-12 Optical Fibers in a gel-filled Central Loose Tube, Aramid Strength Yarns, HFFR Sheath, Cables completely Water Blocking meeting EIA -455-82
AD-CL00A11FTFNWB1	Central Loose Tube (armoured)	1-12 Optical Fibers in a gel-filled Central Loose Tube, Aramid Strength Yarns, Corrugated Steel Armor, PE Sheath, Moderate Water Blocking Construction



Multi Loose Tube Cables

Application For long distance outside plant telephone, cable television as well as data communications
Direct burial and installation in ducts
Aerial installation

P/N	Cable Family	Cable Construction
AD-ML30A03FTFNWB1	Multi Loose Tube	1-360 Optical Fibers in a gel-filled Multi Loose Tube, Rigid Dielectric CSM, Aramid Strength Yarns, Fire Retardant PVC Sheath.
AD-ML30A01FTFNWB1	Multi Loose Tube	1-360 Optical Fibers in a gel-filled Multi Loose Tube, Rigid Dielectric CSM, Aramid Strength Yarns, PE Sheath.
AD-ML30A05FTFNWB1	Multi Loose Tube	1-360 Optical Fibers in a gel-filled Multi Loose Tube, Rigid Dielectric CSM, Aramid Strength Yarns, HFFR Sheath.
AD-ML31A11FTFNWB1	Multi Loose Tube	1-360 Optical Fibers in a gel-filled Multi Loose Tube, Rigid Dielectric CSM, Aramid Strength Yarns, inner PE Jacket, Corrugated Steel Armor, outer PE Sheath.



Remarks : FT - Fiber Type
FN - Fiber Number

Fiber Optic Cable Options

Cable Type Family

S1	Simplex 21
S2	Simplex 28
D1	Duplex Zip
D2	Duplex Flat
MT	Tight Buffer Distribution
BT	Tight Buffer Breakout
CL	Central Loose Tube
ML	Multi Loose Tube



Central Member Options

0	No central strength member	Available in 2 and 4-fiber loose tube cables.
1	Solid Steel	For very high tensile strength cables.
2	Stranded steel	For use when cable flexibility and high strength are required. Cables with this option will not be fully water-blocked.
3	Fiber reinforced plastic (FRP) rigid dielectric CSM.	For dielectric cables.
4	Flexible dielectric CSM	For dielectric flexible cables.
5	Aramid yarn	For dielectric flexible cables, this material is used as a dielectric strength member under a single jacket or between two jacket layers.
6	Additional strength members	For very high tensile strength cables.
7	Rigid FRP CSM & waterblocking yarns	
8	Custom design	

Inner Jacket Options

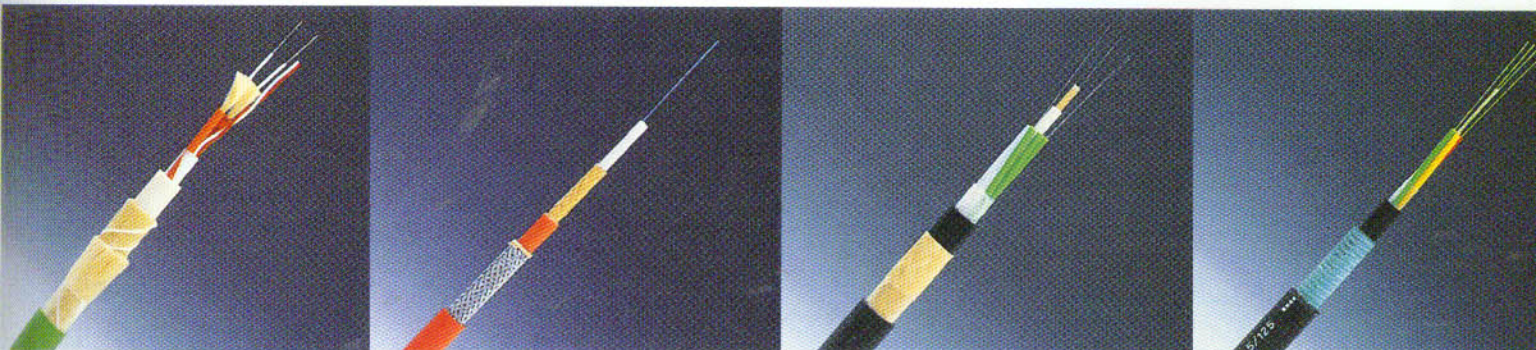
0	No inner jacket	
1	Polyethylene (PE)	
2	PVC	
3	Fire retardant PVC	
4	UV-stabilized PVC	The material includes special additives for protection against damage caused by exposure to the sun.
5	Halogen-Free, Fire-Retardant (HFFR)	For indoor environments where the emission of toxic and corrosive gases in case of fire should be minimized. Fire retardant material would be used if fire retardancy standard is required.
6	Polyurethane	For very high flexibility and for use in harsh environments. Available for some Tight Buffer and Semi-Tight cables only.
7	Custom design	

Strength Member Options

G	Glass yarn	
A	Aramid yarn,	Used as a dielectric strength member under a single jacket or between two jacket layers.
C	Custom design	

Armour Options

0	No armouring	
1	Corrugated steel armoring for protection against rodents	Should be specified in combination with either PE or HFFR inner and outer jacket. For example PRP is a steel rodent protection between two PE layers. Not available with PVC outer jacket.
2	Rigid dielectric armoring for protection against rodents	For use in outdoor dielectric cables. Should be specified in combination with one additional outer jacket material
3	Fiberglass armoring	Flexible dielectric armor.
4	Custom design	



Fiber Optic Cable Options

Outer Jacket Options

0	No outer jacket	
1	Polyethylene (PE)	
2	PVC	
3	Fire retardant PVC	
4	UV-stabilized PVC	The material includes special additives for protection against damage caused by exposure to the sun.
5	Halogen-Free, Fire-Retardant (HFFR)	For indoor environments where the emission of toxic and corrosive gases in case of fire should be minimized. Fire retardant material would be used if fire retardancy standard is required.
6	Polyurethane	For very high flexibility and for use in harsh environments. Available for some Tight Buffer and Semi-Tight cables only.
7	Custom design	

Fibre Type Options

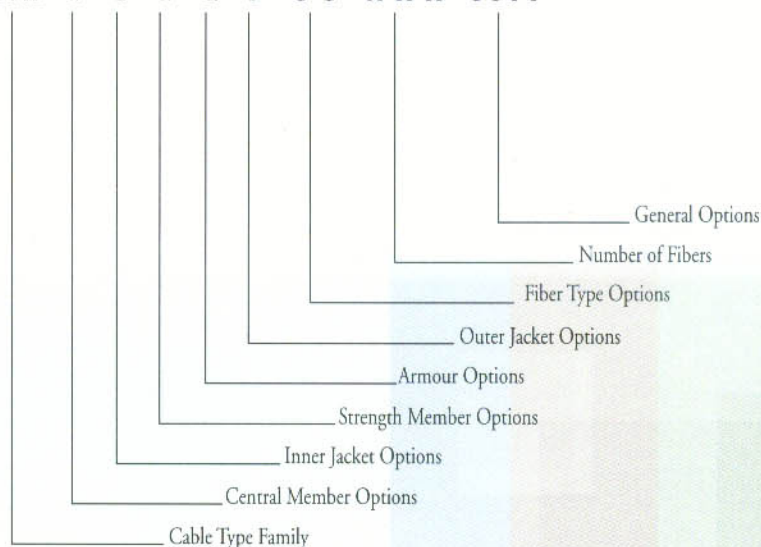
90	9.3/125um Single Mode - Standard grade	For use in long distance, high bandwidth systems such as telecommunication and CATV.
91	9.3/125um Single Mode - Premium grade	For use in long distance, high bandwidth systems such as telecommunication and CATV, where very low attenuation values are specified.
50	50/125um Multi Mode - Standard grade	For use in local area networks.
51	50/125um Multi Mode - Premium grade	For use in local area networks, where very low attenuation is required.
60	62.5/125um Multi Mode - Standard grade	For use in local area networks. This fiber is specified by the ANSI/FDDI standard.
61	62.5/125um Multi Mode - Premium grade	For use in local area networks. This fiber is specified by the ANSI/FDDI standard, where very low attenuation is required.

General Options

WB1	Water-blocking gel in tubes only	For moderate protection against water interaction with the fibers.
WB2	Water-blocking gel in tubes and in cable core interstices	For better protection against water interaction with the fibers.
WB3	Complete water-blocking	For best protection against water interaction with the fibers. Cables with this option meet the fluid penetration requirements in EIA-455-82.
WB4	Water-blocking gel in tubes and in cable core interstices	In conjunction with WB2 provides complete water blocking. According to EIA-455-82.
TB	Tight Buffer	The fibers are tightly buffered by a plastic material. Buffer diameter is 0.9 mm.
STB	Semi-Tight Buffer	A semi-tight buffer, 0.9 mm outer diameter, gel filled
AT	Anti-termite coating	Should be specified in combination with one jacket material if such coating is applied
AL	Aluminum tape as moisture barrier under the jacket	Should be specified in combination with either PE or HFFR outer jacket. Not available with PVC outer jacket.
SS	Figure-8-self-supporting cable	For self-supporting aerial installation, with steel messenger wire
HFFR	Halogen-Free Flame-Retardant (HFFR) minicable sheath	Some cables with HFFR outer jacket can be ordered with minicables sheathed also with HFFR.

Explanation of Product Code

A D - A A - B - C - D - E - F - G G - H H H - I I I I



Optical Fiber Characteristics

Single Mode Fibers

	Parameter	Standard Grade	Premium Grade	Units
		Single Mode	Single Mode	
Fiber Code		90	91	
Attenuation, Loose Tube Cables				
	@1310nm	0.38	0.35	dB/km
	@1550nm	0.25	0.22	dB/km
Attenuation, Tight Buffer or Semi-Tight Cables				
	@1310nm	0.5	0.45	dB/km
	@1550nm	0.5	0.35	dB/km
Dispersion	between 1285 and 1330 nm	3.5	3.5	ps/nm/km
	between 1525 and 1575 nm	19	19	ps/nm/km
Zero Dispersion Wavelength		1310 ±10	1310±10	nm
Mode Field Diameter	@1300nm	9.3±0.5	9.3±0.5	μm
	@1550nm	10.5±1.0	10.5±1.0	μm
Cable Cut-off Wavelength		1250	1250	nm
Cladding Diameter		125±1.0	125±1.0	μm
Mode Field Concentricity Error 0.8		0.8	μm	
Cladding Non-Circularity		1	1	%
Coating Diameter		250±15	250±15	μm
Proof-Test Level		100	100	kpsi

Multi Mode Fibers

	Parameter	Standard Grade	Premium Grade	Standard Grade	Premium Grade	Units
		MultiMode	MultiMode	MultiMode	MultiMode	
		50/125	50/125	62.5/125	62.5/125	
Fiber Code		50	51	60	61	
Attenuation, Loose Tube Cables						
	@850nm	3.2	3.0	3.75	3.2	dB/km
	@1300nm	1.0	1.0	1.2	1.2	dB/km
Attenuation, Tight Buffer and Semi-Tight Cables						
	@850nm	3.5	3.2	3.75	3.5	dB/km
	@1300nm	1.2	1.2	1.5	1.5	dB/km
Bandwidth	@850nm	400	600	160	300	MHz/km
	@1300nm	400	1200	500	1000	MHz/km
Numerical Aperture		0.2±0.02	0.2±0.02	0.275±0.0015	0.275±0.0015	
Core Diameter		50±3	50±3	62.5±3	62.5±3	μm
Cladding Diameter		125±2	125±2	125±2	125±2	μm
Core Non Circularity		6	6	6	6	%
Cladding Non-Circularity		2	2	2	2	%
Core/Cladding Offset		6	6	6	6	%
Coating Diameter		250±15	250±15	250±15	250±15	μm
Proof-Test Level		50	50	50	50	kpsi

Fiber Testing Method

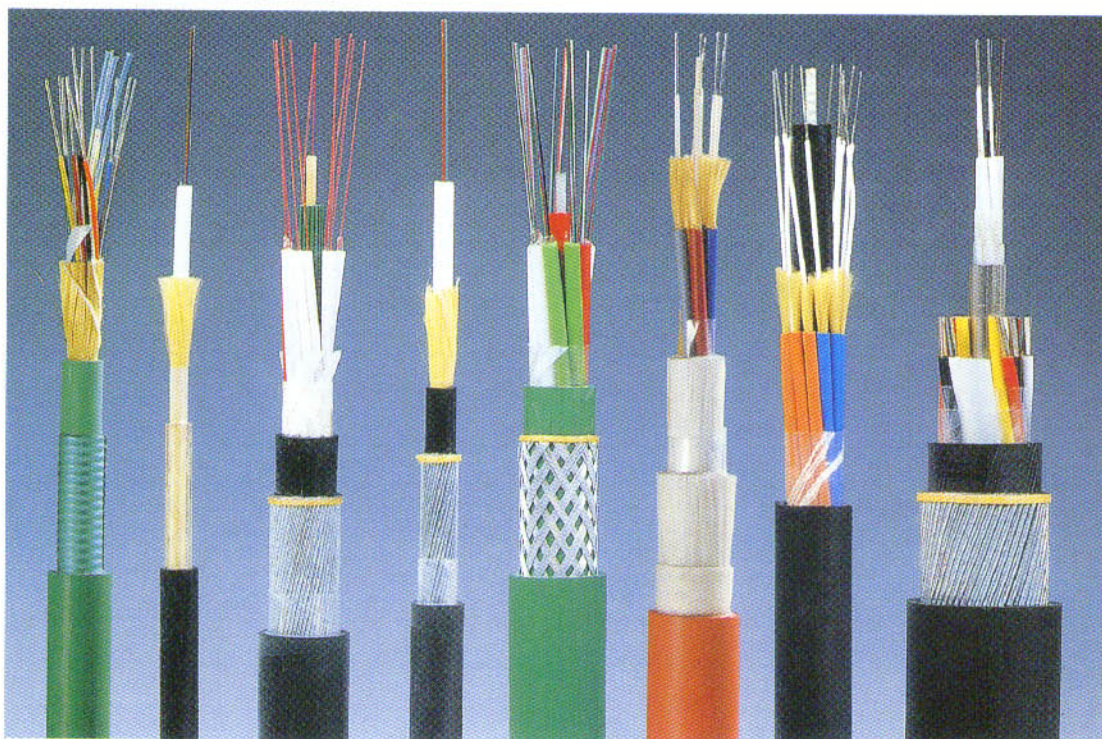
Optical Properties

Testing characteristics	Testing Parameter	EIA/TIA-455 FOTP Number	IEC-793-1 Test Method	ITU-T Test Method
Fiber Geometry	Transmitted Near Field	MM: 58	A2	SM: G.650 Method 2.2.1 MM: G.651, Sec. 1, Method B.3
Spectral Attenuation	Cut-Back	SM Fibers: 78 MM Fibers: 46	C1A	SM: G.650 Method 2.4.1 MM: G.651, Sec. 2.1, Method B.2
Attenuation Uniformity at Specified Wavelengths	Backscattering (OTDR)	61 and 59	C1C	SM: G.650 Method 2.4.2 MM: G.651, Sec. 2, Method B.4
Numerical Aperture (MM)	Far-Field Light Distribution	47	C6	G.651, Sec. 1, Method B.4
Cutoff Wavelength (SM)	Transmitted Power	80, 170	C7A	G.650, Methods 2.3.1, 2.3.3
Mode Field Diameter (SM)	Variable Aperture	167	-	G.650 Method 2.1.2
Bandwidth (MM)	Frequency Domain	30	C2B	G.651 Sec. 3 Method B.2
Chromatic Dispersion (SM)	Pulse Delay	168	C5B	G.650 Method 2.5.3

Mechanical Properties

Testing Characteristics	EIA/TIA-455 FOTP Number	IEC-794-1 Test Method	EN 187000 Test Method *
Operating and Pulling Load	33	E1	501
Minimum Bending Radius	33	E1	501
Compression (Crush)	41	E3	504
Impact Resistance	25	E4	505
Twist (Torson)	85	E7	508
Cyclic Flexing (Repeated Bending)	104	E6	509
Temperature Cycling	3	F1	601

* Equivalent to BS EN 187000, DIN EN 187000 and VDE 0888 Teil 100



Cords

Fiber Patch Cord

Construction:

Fibre	Single Mode/Multimode
Cable Type	Simplex/Duplex/Breakout
Connector Type	ST/SC/FC/SMA905or906/ D4/BICONIC/FDDI/MTRJ/LC
Ferrule	Ceramic/Stainless Steel/Polymer
Outer Jacket	PVC/FRPVC/LSZH
Applicable Standard	EIA Bellcore Compliant

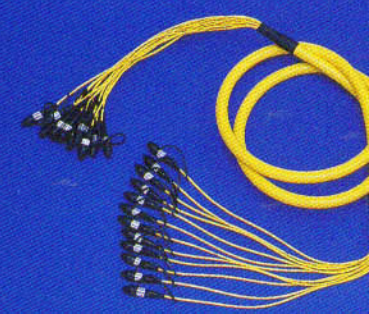
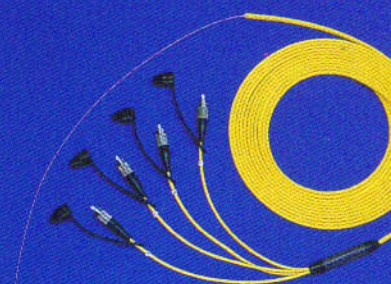
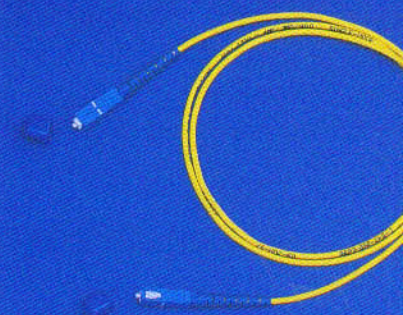
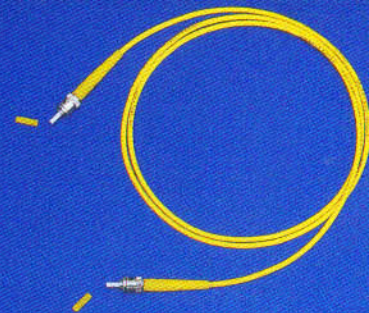
Ordering Code

Example: AD-11S160F003COR-01

Simplex, ST to ST connector. Multimode, 3 feet long
Ceramic Ferrule, OFNR, Yellow Color

AD-A-B-CCCCC-DD-E-FFF-G-HH-II

II	Jacket Color 01-Yellow; 02-Blue, 03-Green, 04-White 05-Orange, 06-Purple, 07-Red, 08-Grey
HH	Fire Performance Rating ON - Normal PVC, OFN grade OR- FRPVC, OFNR Riser Grade OP - FER, OFNP Plenum Grade FR - FRPVC, to IEC 332-3C LH - LSOH grade to IEC 754-1, IEC 1034 P1/2
G	Ferrule Type C - Ceramic, S- Stainless Steel, P- Polymer
FFF	Length F003 - 3 Feet, F005 -5 Feet, F007 - 7 Feet, M001 - 1 Meter, M002 -2 Meter, M003 - 3 meter,
E	Length Unit F- Foot , M-Meter
DD	Fibre Type- 90- Single Mode 9/125um 60- Multimode 62.5/125um 50- Multimode 50/125um
CCCCC	Cable Type Family S1-Simplex, D1-Duplex Zip D2- Duplex Flat, P1 - 1 Fibre Pigtail P4 - 4 Fibre Pigtail , P6 - 6 Fibre Pigtail MTxxx- Tight Buffer Distribution, Fibre Number BTxxx- Tight Buffer Breakout, Fibre Number
B	Right Connector Type 1-ST, 2-SC, 3-FC, 4-SMA905/906, 5-D4 6-BICONIC, 7-FDDI, 8-MTRJ, 9-LC
A	Left Connector Type 1-ST, 2-SC, 3-FC, 4-SMA905/906, 5-D4 6-BICONIC, 7-FDDI, 8-MTRJ, 9-LC



SALES OFFICES

UNITED STATES

35677 Beeching Lane
Fremont, CA 94536-2517
Tel: 510 790-9101
Fax: 510 790-9103

HONGKONG

5th Floor, Qualipak Centre
122 Connaught Road West
Hong Kong
Tel: 852-21161238
Fax: 852-25462028

UNITED KINGDOM

Coastal House
180 Bridge Road,
Southampton, England SO31
Tel: 44-1489-556930
Fax: 44-1489-556931

Phoenix Place, North Street, Lewes
Sussex BN 7 2QJ England

BEIJING, CHINA

C203 Beijing Lufthansa Center Office
No 5 Liang Maquao Road
Chaoyang District
Beijing 100016 China
Tel: 10-62363087
Fax: 10-62363087

SINGAPORE

111 North Bridge Road
#27-01/2 Peninsula Plaza
Singapore 179098
Tel: 65-65593765
Fax: 65-63893988

SHENZHEN, CHINA

Unit 722, Zhenye Building
Bao An Shan
Shenzhen China
Tel: 755-25921177
Fax: 755-25921177

ADDISON
www.addison-tech.com